

Recombinant Human SDC1 protein, hFc-tagged

Cat. No. SDC1-1296H Lot. No. (See product label)

SPECIFICATION

Product Overview	Recombinant Human SDC1 protein(AAH08765)(Gln23-Gly254), fused with C-terminal hFc tag, was expressed in HEK293.
Species	Human
Source	HEK293
ProteinLength	Gln23-Gly254
Tag	C-hFc
Form	Lyophilized from 0.22µm filtered solution in PBS (pH 7.4). Normally 8% trehalose is added as protectant before lyophilization.
Bio-activity	Immobilized Human Syndecan-1, hFc Tag at 1µg/ml (100µl/Well) on the plate. Dose response curve for Biotinylated Anti-Syndecan-1 Antibody, hFc Tag with the EC50 of 28.8ng/ml determined by ELISA.
Molecular Mass	The protein has a predicted MW of 50.6 kDa. Due to glycosylation, the protein migrates to 70-100 kDa based on Tris-Bis PAGE result.
Endotoxin	Less than 1EU per µg by the LAL method.
Purity	> 95% as determined by Tris-Bis PAGE

 Tel: 1-631-559-9269 1-516-512-3133

 Email: info@creative-biomart.com  Fax: 1-631-938-8127

 45-1 Ramsey Road, Shirley, NY 11967, USA

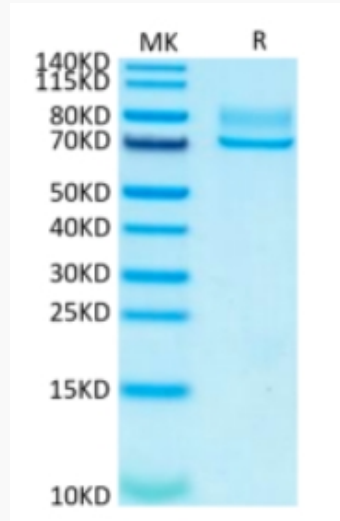
Storage	Reconstituted protein stable at -80°C for 12 months, 4°C for 1 week. Use a manual defrost freezer and avoid repeated freeze-thaw cycles.
Reconstitution	Centrifuge tubes before opening. Reconstituting to a concentration more than 100 µg/ml is recommended. Dissolve the lyophilized protein in distilled water.
GENE INFORMATION	
Gene Name	SDC1 syndecan 1 [Homo sapiens]
Official Symbol	SDC1
Synonyms	SDC1; syndecan 1; SDC; syndecan-1; CD138; SYND1; syndecan; syndecan proteoglycan 1; CD138 antigen; heparan sulfate proteoglycan fibroblast growth factor receptor;
Gene ID	6382
mRNA Refseq	NM_001006946
Protein Refseq	NP_001006947
MIM	186355
UniProt ID	P18827

 Tel: 1-631-559-9269 1-516-512-3133

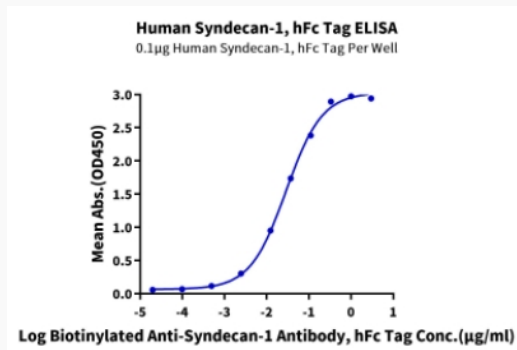
 Email: info@creative-biomart.com  Fax: 1-631-938-8127

 45-1 Ramsey Road, Shirley, NY 11967, USA

Tris-Bis PAGE



ELISA Data



 Tel: 1-631-559-9269 1-516-512-3133

 Email: info@creative-biomart.com  Fax: 1-631-938-8127

 45-1 Ramsey Road, Shirley, NY 11967, USA