

Recombinant Human SDC1 Protein, His-tagged

Cat. No. SDC1-15H Lot. No. (See product label)

SPECIFICATION

Product Overview	Recombinant human SDC1 (18-254aa) protein, fused to His-tag at N-terminus, was expressed in E.coli and purified by using conventional chromatography techniques.
Species	Human
Source	E.coli
ProteinLength	18-254 a.a.
Description	Syndecan-1 precursor, also known as SDC1, is a transmembrane heparin sulphate proteoglycan which is made up of one core protein and five glycosaminoglycan. SDC1 is expected to play a role in cell adhesion. It is expressed on the surface of pre-B cells and plasma cells but is absent from mature B cells. It is a selective marker for B cell lymphoblastic leukemia and lymphoplasmacytoid leukemia.
Form	Liquid
Molecular Mass	27 kDa
AA Sequence	MGSSHHHHHSSGLVPRGSHMGSHMQPALPQIVATNLPPEDQDGSDDSDNFSG SGAGALQDITLSQQTPSTWKDTQLLTAIPTSPEPTGLEATAASTSTLPAGEGPKKEG AVVLPEVEPGLTAREQEATPRPRETTQLPTTHQASTTTATTAQEPATSHPHRDMQP GHHETSTPAGPSQADLHTPHTEDGGPSATERAAEDGASSQLPAAEGSGEQDFTFE TSGENTAVVAVEPDRRNQSPVDQGATGASQGLLDRKEVLG

 Tel: 1-631-559-9269 1-516-512-3133

 Email: info@creative-biomart.com  Fax: 1-631-938-8127

 45-1 Ramsey Road, Shirley, NY 11967, USA

Purity	> 90% by SDS - PAGE
Notes	For research use only. This product is not intended or approved for human, diagnostics or veterinary use
Storage	Can be stored at +4 centigrade short term (1-2 weeks). For long term storage, aliquot and store at -20 centigrade or -70 centigrade. Avoid repeated freezing and thawing cycles.
Concentration	1 mg/mL
Storage Buffer	In 20mM Tris-HCl buffer (pH 8.0) containing 0.1M NaCl, 10% glycerol
GENE INFORMATION	
Gene Name	SDC1
Official Symbol	SDC1 syndecan 1 [Homo sapiens (human)]
Synonyms	SDC1; syndecan 1; CD138; SDC; SYND1; syndecan; syndecan-1; CD138 antigen; heparan sulfate proteoglycan fibroblast growth factor receptor; syndecan proteoglycan 1
Gene ID	6382
mRNA Refseq	NM_002997
Protein Refseq	NP_002988
MIM	186355

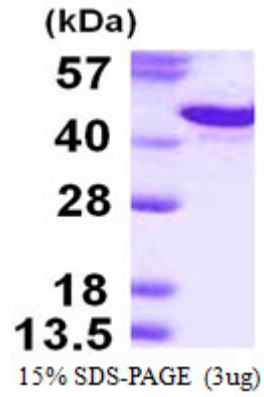
 Tel: 1-631-559-9269 1-516-512-3133

 Email: info@creative-biomart.com  Fax: 1-631-938-8127

 45-1 Ramsey Road, Shirley, NY 11967, USA

UniProt ID

P18827



 Tel: 1-631-559-9269 1-516-512-3133

 Email: info@creative-biomart.com  Fax: 1-631-938-8127

 45-1 Ramsey Road, Shirley, NY 11967, USA