

## Recombinant Human SDC1 protein, His & GST-tagged

Cat. No. SDC1-2033H Lot. No. (See product label)

### SPECIFICATION

<b>Product Overview</b>	Recombinant Human SDC1 aa. (Gln23~Leu253 (Accession # P18827)) fused with N-terminal His & GST tag was produced in E. coli cells.
<b>Species</b>	Human
<b>Source</b>	E.coli
<b>ProteinLength</b>	Gln23~Leu253
<b>Form</b>	Freeze-dried powder
<b>Molecular Mass</b>	Predicted Molecular Mass: 56.2kDa
<b>Endotoxin</b>	<1.0EU per 1ug (determined by the LAL method)
<b>Purity</b>	>95%
<b>Characteristic</b>	The isoelectric point is 5.
<b>Applications</b>	SDS-PAGE; WB; ELISA; IP.
<b>Stability</b>	The thermal stability is described by the loss rate of the target protein. The loss rate was determined by accelerated thermal degradation test, that is, incubate the protein at 37°C for 48h, and no obvious degradation and precipitation were observed. (Referring from China Biological Products Standard, which was calculated by the

 Tel: 1-631-559-9269 1-516-512-3133

 Email: [info@creative-biomart.com](mailto:info@creative-biomart.com)  Fax: 1-631-938-8127

 45-1 Ramsey Road, Shirley, NY 11967, USA

Arrhenius equation.) The loss of this protein is less than 5% within the expiration date under appropriate storage condition.

**Storage**

Avoid repeated freeze/thaw cycles. Store at 2-8°C for one month. Aliquot and store at -80°C for 12 months.

**Storage Buffer**

Supplied as lyophilized form in PBS, pH7.4, containing 5% trehalose, 0.01% sarcosyl.

**Reconstitution**

Reconstitute in sterile PBS, pH7.2-pH7.4.

## GENE INFORMATION

**Gene Name**

[SDC1 syndecan 1 \[ Homo sapiens \(human\) \]](#)

**Official Symbol**

[SDC1](#)

**Synonyms**

ABCB10; ATP binding cassette subfamily B member 10; M-ABC2; MTABC2; EST20237; ATP-binding cassette sub-family B member 10, mitochondrial; ABC transporter 10 protein; ATP-binding cassette transporter 10; ATP-binding cassette, sub-family B (MDR/TAP), member 10; mitochondrial ATP-binding cassette 2

**Gene ID**

[6382](#)

**mRNA Refseq**

[NM\\_001006946.1](#)

**Protein Refseq**

[NP\\_001006947.1](#)

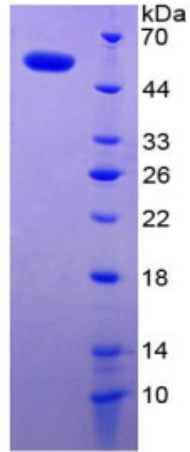
**UniProt ID**

[P18827](#)

 Tel: 1-631-559-9269 1-516-512-3133

 Email: [info@creative-biomart.com](mailto:info@creative-biomart.com)  Fax: 1-631-938-8127

 45-1 Ramsey Road, Shirley, NY 11967, USA



15% SDS-PAGE

SDS-PAGE

Tel: 1-631-559-9269 1-516-512-3133

Email: [info@creative-biomart.com](mailto:info@creative-biomart.com) Fax: 1-631-938-8127

45-1 Ramsey Road, Shirley, NY 11967, USA