

Recombinant Human SDC1 Protein (Gln23-Gly254), C-hFc and 6xHis-tagged

Cat. No. SDC1-557H **Lot. No.** (See product label)

SPECIFICATION

Product Overview	Recombinant Human SDC1 Protein (Gln23-Gly254) with C-hFc and 6xHis tag was expressed in HEK293.
Species	Human
Source	HEK293
ProteinLength	Gln23-Gly254
Description	Syndecan-1 (SYND1 or SDC1) is also known as CD antigen CD138, is a transmembrane (type I) heparan sulfate proteoglycan and is a member of the syndecan proteoglycan family. The syndecans mediate cell binding, cell signaling, and cytoskeletal organization and syndecan receptors are required for internalization of the HIV-1 tat protein. The syndecan-1 / SDC1 protein functions as an integral membrane protein and participates in cell proliferation, cell migration and cell-matrix interactions via its receptor for extracellular matrix proteins. It is a useful marker for plasma cells, but only if the cells tested are already known to be derived from blood.
Form	Lyophilized
Molecular Mass	85-93 kDa
Purity	> 95% as determined by SDS-PAGE and Coomassie blue staining.

 Tel: 1-631-559-9269 1-516-512-3133

 Email: info@creative-biomart.com  Fax: 1-631-938-8127

 45-1 Ramsey Road, Shirley, NY 11967, USA

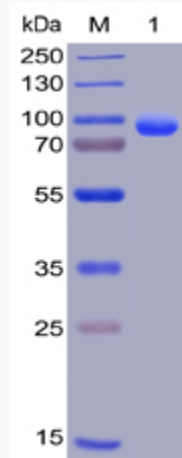
Storage	Store at -80 centigrade for 12 months (Avoid repeated freezing and thawing)
Storage Buffer	Lyophilized from sterile PBS, pH 7.4. Normally 5 % - 13 % trehalose is added as protectants before lyophilization.
GENE INFORMATION	
Gene Name	SDC1 syndecan 1 [Homo sapiens (human)]
Official Symbol	SDC1
Synonyms	SDC1; syndecan 1; SDC; syndecan-1; CD138; SYND1; syndecan; syndecan proteoglycan 1; CD138 antigen; heparan sulfate proteoglycan fibroblast growth factor receptor;
Gene ID	6382
mRNA Refseq	NM_001006946
Protein Refseq	NP_001006947
MIM	186355
UniProt ID	P18827

 Tel: 1-631-559-9269 1-516-512-3133

 Email: info@creative-biomart.com  Fax: 1-631-938-8127

 45-1 Ramsey Road, Shirley, NY 11967, USA

SDS-PAGE



 Tel: 1-631-559-9269 1-516-512-3133

 Email: info@creative-biomart.com  Fax: 1-631-938-8127

 45-1 Ramsey Road, Shirley, NY 11967, USA