

## Recombinant Human SDC1 Protein (Gln23-Glu251), C-His tagged

Cat. No. SDC1-6248H Lot. No. (See product label)

### SPECIFICATION

<b>Product Overview</b>	Recombinant human SDC1 (Gln23-Glu251) fused with the C-terminal His tag was expressed in mammalian cells.
<b>Species</b>	Human
<b>Source</b>	Mammalian Cells
<b>ProteinLength</b>	Gln23-Glu251
<b>Form</b>	Lyophilized powder/frozen liquid
<b>Molecular Mass</b>	25.19 kDa
<b>Purity</b>	> 90 % as determined by SDS-PAGE
<b>Notes</b>	For research use only.
<b>Storage</b>	Use a manual defrost freezer and avoid repeated freeze thaw cycles. Store at 2 to 8 centigrade for one week. Store at -20 to -80 centigrade for twelve months from the date of receipt.
<b>Storage Buffer</b>	Supplied as solution form in PBS or lyophilized from PBS.
<b>Reconstitution</b>	Reconstitute in sterile water for a stock solution.

 Tel: 1-631-559-9269 1-516-512-3133

 Email: [info@creative-biomart.com](mailto:info@creative-biomart.com)  Fax: 1-631-938-8127

 45-1 Ramsey Road, Shirley, NY 11967, USA

**Shipping** They are shipped out with dry ice/blue ice unless customers require otherwise.

## GENE INFORMATION

**Gene Name** SDC1 syndecan 1 [ Homo sapiens (human) ]

**Official Symbol** SDC1

**Synonyms** SDC1; syndecan 1; SDC; syndecan-1; CD138; SYND1; syndecan; syndecan proteoglycan 1; CD138 antigen; heparan sulfate proteoglycan fibroblast growth factor receptor;

**Gene ID** 6382

**mRNA Refseq** NM\_001006946

**Protein Refseq** NP\_001006947

**MIM** 186355

**UniProt ID** P18827

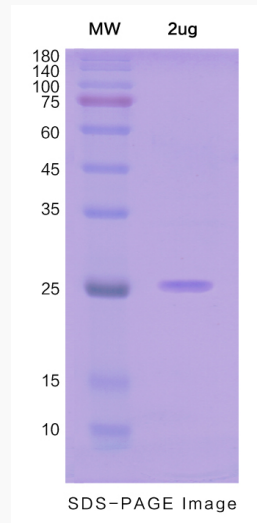
 Tel: 1-631-559-9269 1-516-512-3133

 Email: [info@creative-biomart.com](mailto:info@creative-biomart.com)  Fax: 1-631-938-8127

 45-1 Ramsey Road, Shirley, NY 11967, USA



SDS-PAGE



Tel: 1-631-559-9269 1-516-512-3133

Email: [info@creative-biomart.com](mailto:info@creative-biomart.com) Fax: 1-631-938-8127

45-1 Ramsey Road, Shirley, NY 11967, USA