

Recombinant Human SDC2 Protein, C-His-tagged

Cat. No. SDC2-127H **Lot. No.** (See product label)

SPECIFICATION

Product Overview	Recombinant Human SDC2 Protein with C-His tag was expressed in E. coli.
Species	Human
Source	E.coli
ProteinLength	19-144 a.a.
Description	<p>Syndecans are type I integral membrane proteoglycans that contain both chondroitin sulfate and heparan sulfate groups. Syndecans are involved in cell-extracellular matrix adhesion and growth factor binding. Syndecan-1 (SYND1, also called CD138) is an extracellular matrix receptor which binds to collagens, Fibronectin and Thrombospondin. Syndecan-1 and Syndecan-3 (also designated N-Syndecan) interact with MK (midkine), a growth/differentiation factor involved in embryogenesis of the central nervous system. Syndecan-2 (also designated fibroglycan or HSPG) is highly expressed at areas of high morphogenetic activity, such as epithelial-mesenchymal interfaces and the prechondrogenic and preosteogenic mesenchymal condensations. Syndecan-4 (also designated amphiglycan or ryudocan) functions cooperatively with integrins in the processes of cell spreading, focal adhesion assembly and Actin stress fiber assembly</p>
Molecular Mass	~14 kDa
AA Sequence	ESRAELTSKDMYLDNSSIEEASGVYPIDDDDYASASGSGADEDVESPELTTSRPLPKILLTSAAPKVETTTLNIQNKIPAQTKSPEETDKEKVHLSDSERKMDPAEEDTNVYTE

 Tel: 1-631-559-9269 1-516-512-3133

 Email: info@creative-biomart.com  Fax: 1-631-938-8127

 45-1 Ramsey Road, Shirley, NY 11967, USA

	KHSDSLFKRTE
Purity	Transferred into competent cells and the supernatant was purified by NI column affinity chromatography and the purity is > 85% (by SDS-PAGE).
Notes	For research use only, not for use in diagnostic procedure.
Storage	Store at 4 centigrade short term. Aliquot and store at -20 centigrade long term. Avoid freeze-thaw cycles.
Concentration	≥0.5 mg/mL
Storage Buffer	PBS, 4M Urea, pH7.4

GENE INFORMATION

Gene Name	SDC2 syndecan 2 [Homo sapiens (human)]
Official Symbol	SDC2
Synonyms	SDC2; syndecan 2; heparan sulfate proteoglycan 1, cell surface associated , HSPG, HSPG1; syndecan-2; CD362; fibroglycan; SYND2; syndecan proteoglycan 2; heparan sulfate proteoglycan core protein; cell surface-associated heparan sulfate proteoglycan 1; heparan sulfate proteoglycan 1, cell surface-associated; HSPG; HSPG1;
Gene ID	6383
mRNA Refseq	NM_002998
Protein Refseq	NP_002989

 Tel: 1-631-559-9269 1-516-512-3133

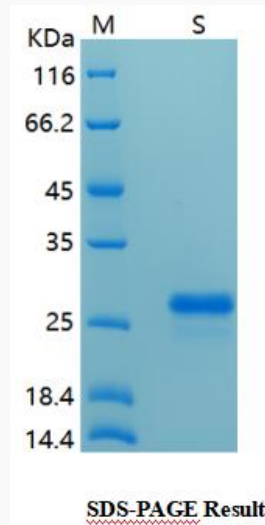
 Email: info@creative-biomart.com  Fax: 1-631-938-8127

 45-1 Ramsey Road, Shirley, NY 11967, USA

MIM 142460

UniProt ID P34741

SDS-PAGE



 Tel: 1-631-559-9269 1-516-512-3133

 Email: info@creative-biomart.com  Fax: 1-631-938-8127

 45-1 Ramsey Road, Shirley, NY 11967, USA