

Recombinant Human SDC2 protein, His-tagged

Cat. No. SDC2-2835H Lot. No. (See product label)

SPECIFICATION

Product Overview	Recombinant Human SDC2 aa. (Glu19~Glu144) fused with N-terminal His tag was produced in E. coli cells.
Species	Human
Source	E.coli
ProteinLength	Glu19~Glu144
Description	<p>The protein encoded by this gene is a transmembrane (type I) heparan sulfate proteoglycan and is a member of the syndecan proteoglycan family. The syndecans mediate cell binding, cell signaling, and cytoskeletal organization and syndecan receptors are required for internalization of the HIV-1 tat protein. The syndecan-2 protein functions as an integral membrane protein and participates in cell proliferation, cell migration and cell-matrix interactions via its receptor for extracellular matrix proteins. Altered syndecan-2 expression has been detected in several different tumor types.</p>
Form	Freeze-dried powder
Molecular Mass	23kDa as determined by SDS-PAGE reducing conditions.
Endotoxin	<1.0EU per 1g (determined by the LAL method)
Purity	>95%

 Tel: 1-631-559-9269 1-516-512-3133

 Email: info@creative-biomart.com  Fax: 1-631-938-8127

 45-1 Ramsey Road, Shirley, NY 11967, USA

Characteristic	The isoelectric point is 4.7.
Applications	SDS-PAGE; WB; ELISA; IP; CoIP; Purification; Amine Reactive Labeling.
Stability	The thermal stability is described by the loss rate. The loss rate was determined by accelerated thermal degradation test, that is, incubate the protein at 37°C for 48h, and no obvious degradation and precipitation were observed. The loss rate is less than 5% within the expiration date under appropriate storage condition.
Storage	Avoid repeated freeze/thaw cycles. Store at 2-8°C for one month. Aliquot and store at -80°C for 12 months.
Concentration	200µg/mL
Storage buffer	20mM Tris, 150mM NaCl, pH8.0, containing 1mM EDTA, 1mM DTT, 0.01% sarcosyl, 5%Trehalose and Proclin300.
Reconstitution	Reconstitute in 20mM Tris, 150mM NaCl (pH8.0) to a concentration of 0.1-1.0 mg/mL. Do not vortex.

GENE INFORMATION

Gene Name	SDC2 syndecan 2 [Homo sapiens (human)]
Official Symbol	SDC2
Synonyms	HSPG; CD362; HSPG1; SYND2; cell surface-associated heparan sulfate proteoglycan 1; fibroglycan; heparan sulfate proteoglycan 1, cell surface-associated; heparan sulfate proteoglycan core protein; syndecan proteoglycan 2; syndecan-2
Gene ID	6383

 Tel: 1-631-559-9269 1-516-512-3133

 Email: info@creative-biomart.com  Fax: 1-631-938-8127

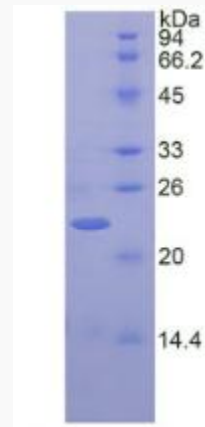
 45-1 Ramsey Road, Shirley, NY 11967, USA

mRNA Refseq [NM_002998.3](#)

Protein Refseq [NP_002989.2](#)

UniProt ID [P34741](#)

SDS-PAGE



 Tel: 1-631-559-9269 1-516-512-3133

 Email: info@creative-biomart.com  Fax: 1-631-938-8127

 45-1 Ramsey Road, Shirley, NY 11967, USA