

Recombinant Human SDC2 Protein (Met1-Glu144), C-His tagged

Cat. No. SDC2-5081H Lot. No. (See product label)

SPECIFICATION

Product Overview	Recombinant human SDC2 (Met1-Glu144) fused with the C-terminal His tag was expressed in Mammalian cells.
Species	Human
Source	Mammalian Cells
ProteinLength	Met1-Glu144
Form	Lyophilized powder/frozen liquid
Molecular Mass	15.84 kDa
Endotoxin	< 1.0 EU/μg of the protein as determined by the LAL method.
Purity	>90% as determined by SDS-PAGE.
Notes	For research use only.
Storage	Use a manual defrost freezer and avoid repeated freeze thaw cycles. Store at 2 to 8 centigrade for one week. Store at -20 to -80 centigrade for twelve months from the date of receipt.
Storage Buffer	Supplied as solution form in PBS or lyophilized from PBS.

 Tel: 1-631-559-9269 1-516-512-3133

 Email: info@creative-biomart.com  Fax: 1-631-938-8127

 45-1 Ramsey Road, Shirley, NY 11967, USA

Reconstitution Reconstitute in sterile water for a stock solution.

Shipping They are shipped out with dry ice/blue ice unless customers require otherwise.

GENE INFORMATION

Gene Name [SDC2 syndecan 2 \[Homo sapiens \(human\) \]](#)

Official Symbol [SDC2](#)

Synonyms SDC2; syndecan 2; heparan sulfate proteoglycan 1, cell surface associated, HSPG, HSPG1; syndecan-2; CD362; fibroglycan; SYND2; syndecan proteoglycan 2; heparan sulfate proteoglycan core protein; cell surface-associated heparan sulfate proteoglycan 1; heparan sulfate proteoglycan 1, cell surface-associated; HSPG; HSPG1;

Gene ID [6383](#)

mRNA Refseq [NM_002998](#)

Protein Refseq [NP_002989](#)

MIM [142460](#)

UniProt ID [P34741](#)

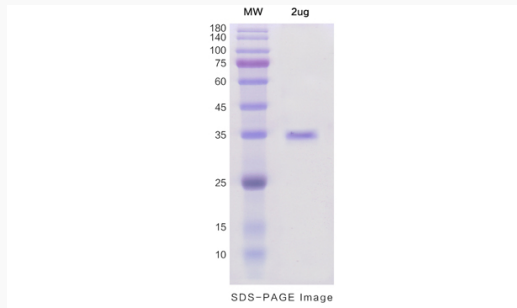
 Tel: 1-631-559-9269 1-516-512-3133

 Email: info@creative-biomart.com  Fax: 1-631-938-8127

 45-1 Ramsey Road, Shirley, NY 11967, USA



SDS-PAGE



Tel: 1-631-559-9269 1-516-512-3133

Email: info@creative-biomart.com Fax: 1-631-938-8127

45-1 Ramsey Road, Shirley, NY 11967, USA