

Recombinant Human SDC2 Protein, His-tagged

Cat. No. SDC2-66H Lot. No. (See product label)

SPECIFICATION

Product Overview	Recombinant Human Syndecan-2 is produced by our Mammalian expression system and the target gene encoding Glu19-Glu144 is expressed with a 6His tag at the C-terminus.
Species	Human
Source	Human Cells
Description	Syndecan-2 is a member of the Syndecans family comprised of type I transmembrane heparan sulfate proteoglycans (HSPG) that are involved in the regulation of many cellular processes. Four sub-types of mammalian Syndecans have been reported and among them, Syndecan-2 plays a role in the cancer development. It can affect the basal and chemotherapy-induced apoptosis in osteosarcoma. It can also suppress MMP2 activation, suppressing metastasis.
Form	Lyophilized from a 0.2 um filtered solution of 20mM Tris-Citrate, 150mM NaCl, pH 7.0.
AA Sequence	Glu19-Glu144
Endotoxin	Less than 0.1 ng/ug (1 EU/ug).
Shipping	Ambient

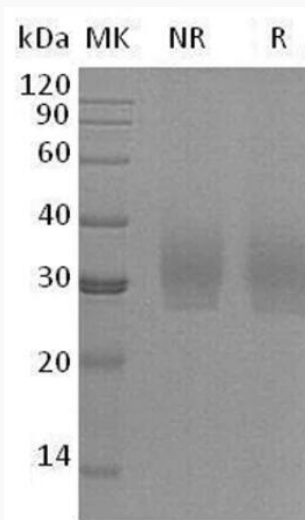
GENE INFORMATION

 Tel: 1-631-559-9269 1-516-512-3133

 Email: info@creative-biomart.com  Fax: 1-631-938-8127

 45-1 Ramsey Road, Shirley, NY 11967, USA

Gene Name	SDC2 syndecan 2 [Homo sapiens (human)]
Official Symbol	SDC2
Synonyms	Syndecan-2; Fibroglycan; Heparan Sulfate Proteoglycan Core Protein; HSPG; CD362; HSPG1; SYND2
Gene ID	6383
mRNA Refseq	NM_002998.4
Protein Refseq	NP_002989.2
MIM	142460
UniProt ID	P34741

SDS-PAGE


Tel: 1-631-559-9269 1-516-512-3133

Email: info@creative-biomart.com Fax: 1-631-938-8127

45-1 Ramsey Road, Shirley, NY 11967, USA