

Recombinant Chicken SDC4 protein, His & T7-tagged

Cat. No. SDC4-1992C Lot. No. (See product label)

SPECIFICATION

Product Overview	Recombinant Chicken SDC4 aa. (Glu20~Thr147 (Accession # P49416)) fused with N-terminal His & T7 tag was produced in E. coli cells.
Species	Chicken
Source	E.coli
ProteinLength	Glu20~Thr147
Form	Freeze-dried powder
Molecular Mass	Predicted Molecular Mass: 17.7kDa
Endotoxin	<1.0EU per 1ug (determined by the LAL method)
Purity	> 95%
Characteristic	The isoelectric point is 4.4.
Applications	SDS-PAGE; WB; ELISA; IP.
Stability	The thermal stability is described by the loss rate of the target protein. The loss rate was determined by accelerated thermal degradation test, that is, incubate the protein at 37°C for 48h, and no obvious degradation and precipitation were observed. (Referring from China Biological Products Standard, which was calculated by the

 Tel: 1-631-559-9269 1-516-512-3133

 Email: info@creative-biomart.com  Fax: 1-631-938-8127

 45-1 Ramsey Road, Shirley, NY 11967, USA

Arrhenius equation.) The loss of this protein is less than 5% within the expiration date under appropriate storage condition.

Storage

Avoid repeated freeze/thaw cycles. Store at 2-8°C for one month. Aliquot and store at -80°C for 12 months.

Storage Buffer

Supplied as lyophilized form in PBS, pH7.4, containing 5% sucrose, 0.01% sarcosyl.

Reconstitution

Reconstitute in sterile PBS, pH7.2-pH7.4.

GENE INFORMATION

Gene Name

SDC4 syndecan 4 [*Gallus gallus* (chicken)]

Official Symbol

SDC4

Synonyms

PTPN5; protein tyrosine phosphatase, non-receptor type 5; STEP; STEP61; PTPSTEP; tyrosine-protein phosphatase non-receptor type 5; neural-specific protein-tyrosine phosphatase; protein tyrosine phosphatase, non-receptor type 5 (striatum-enriched); protein-tyrosine phosphatase striatum-enriched; striatal-enriched protein tyrosine phosphatase; striatum-enriched protein-tyrosine phosphatase

Gene ID

419184

mRNA Refseq

NM_001007869.1

Protein Refseq

NP_001007870.1

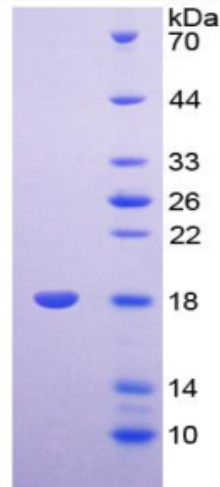
UniProt ID

P49416

 Tel: 1-631-559-9269 1-516-512-3133

 Email: info@creative-biomart.com  Fax: 1-631-938-8127

 45-1 Ramsey Road, Shirley, NY 11967, USA



15% SDS-PAGE

SDS-PAGE

Tel: 1-631-559-9269 1-516-512-3133

Email: info@creative-biomart.com Fax: 1-631-938-8127

45-1 Ramsey Road, Shirley, NY 11967, USA