

Recombinant Human SDF4 protein, His-tagged

Cat. No. SDF4-720H **Lot. No.** (See product label)

SPECIFICATION

Product Overview	Recombinant Human SDF4 aa. (Asp154~Phe362 (Accession # Q9BRK5)) fused with N-terminal His tag was produced in E. coli cells.
Species	Human
Source	E.coli
ProteinLength	Asp154~Phe362
Description	This gene encodes a stromal cell derived factor that is a member of the CREC protein family. The encoded protein contains six EF-hand motifs and calcium-binding motifs. This protein localizes to the Golgi lumen and may be involved in regulating calcium dependent cellular activities.
Form	Freeze-dried powder
Molecular Mass	Predicted Molecular Mass: 25.8kDa
Endotoxin	<1.0EU per 1g (determined by the LAL method)
Purity	>95%
Characteristic	The isoelectric point is 4.6.
Applications	SDS-PAGE; WB; ELISA; IP

 Tel: 1-631-559-9269 1-516-512-3133

 Email: info@creative-biomart.com  Fax: 1-631-938-8127

 45-1 Ramsey Road, Shirley, NY 11967, USA

Stability	The thermal stability is described by the loss rate. The loss rate was determined by accelerated thermal degradation test, that is, incubate the protein at 37°C for 48h, and no obvious degradation and precipitation were observed. The loss rate is less than 5% within the expiration date under appropriate storage condition.
Storage	Avoid repeated freeze/thaw cycles. Store at 2-8°C for one month. Aliquot and store at -80°C for 12 months.
Storage buffer	Supplied as lyophilized form in PBS, pH7.4, containing 5% trehalose, 0.01% sarcosyl.
Reconstitution	Reconstitute in sterile PBS, pH7.2-pH7.4.

GENE INFORMATION

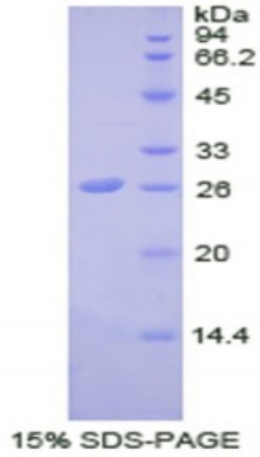
Gene Name	SDF4 stromal cell derived factor 4 [Homo sapiens (human)]
Official Symbol	SDF4
Synonyms	SDF4; stromal cell derived factor 4; Cab45; SDF-4; 45 kDa calcium-binding protein
Gene ID	51150
mRNA Refseq	NM_016176.3
Protein Refseq	NP_057260.2
UniProt ID	Q9BRK5

 Tel: 1-631-559-9269 1-516-512-3133

 Email: info@creative-biomart.com  Fax: 1-631-938-8127

 45-1 Ramsey Road, Shirley, NY 11967, USA

SDS-PAGE



 Tel: 1-631-559-9269 1-516-512-3133

 Email: info@creative-biomart.com  Fax: 1-631-938-8127

 45-1 Ramsey Road, Shirley, NY 11967, USA