

Recombinant Human SDHA protein, His-tagged

Cat. No. SDHA-1365H Lot. No. (See product label)

SPECIFICATION

Product Overview	Recombinant Human SDHA protein(P31040)(44-664 aa), fused with C-terminal His tag, was expressed in E.coli.
Species	Human
Source	E.coli
ProteinLength	44-664 aa
Form	Lyophilized from PBS, 6% Trehalose, pH 7.4. The volume before lyophilization is 335µl/vial.
Molecular Mass	74.9 kDa
AASequence	<p>SAKVSDSISAQYPVVDHEFDAVVVGAGGAGLRAAFGLSEAGFNTACVTKLFPTRSH TVAAQGGINAALGNMEEDNWRWHFYDTVKGSDWLGDDQDAIHYMTEQAPAAVVELE NYGMPFSRTEDGKIYQRAFQQSLKFGKGGQAHRCCCVADRTGHSLLHTLYGRSL RYDTSYFVEYFALDLLMENGECRGVIALCIEDGSIHRIRAKNTVVATGGYGRTYFSCT SAHTSTGDGTAMITRAGLPCQDLEFVQFHPTGIYGAGCLITEGCRGEGGILINSQGE RFMERYAPVAKDLASRDVVSRSMTLEIREGRGCGPEKDHVYLQLHHLPPQLATRL PGISETAMIFAGVDVTKEPIVLPVHYNMGGIPTNYKGQVLRHVNGQDQIVPGLYA CGEAACASVHGANRLGANLLDLVVFGRACALSIEESCRPGDKVPPKPNAGEESV MNLDKLRFADGSIRTSELRLSMQKSMQNHAAVFRVGSVLQEGCGKISKLYGDLKHL KTFDRGMVWNTDLVETLELQNLMLCALQTIYGAEARKESRGAHAREDYKVRIDEYD YSKPIQQQKKPFEEHWRKHTLSYVDVGTGKVTLEYRPVIDKTLNEADCATVPPAIR</p>

 Tel: 1-631-559-9269 1-516-512-3133

 Email: info@creative-biomart.com  Fax: 1-631-938-8127

 45-1 Ramsey Road, Shirley, NY 11967, USA

	SY
Purity	≥85%, by SDS-PAGE quantitative densitometry by Coomassie Blue Staining.
Storage	Store at -20°C, for extended storage, conserve at -20°C or -80°C.
Reconstitution	We recommend that this vial be briefly centrifuged prior to opening to bring the contents to the bottom. Please reconstitute protein in deionized sterile water to a concentration of 0.1-1.0 mg/mL. We recommend to add 5-50% of glycerol (final concentration) and aliquot for long-term storage at -20°C/-80°C. Our default final concentration of glycerol is 50%. Customers could use it as reference.
GENE INFORMATION	
Gene Name	SDHA succinate dehydrogenase complex, subunit A, flavoprotein (Fp) [Homo sapiens]
Official Symbol	SDHA
Synonyms	SDHA; succinate dehydrogenase complex, subunit A, flavoprotein (Fp); SDH2; succinate dehydrogenase [ubiquinone] flavoprotein subunit, mitochondrial; FP; SDHF; flavoprotein subunit of complex II; succinate dehydrogenase complex flavoprotein subunit; PGL5; SDH1; CMD1GG;
Gene ID	6389
mRNA Refseq	NM_004168
Protein Refseq	NP_004159
MIM	600857

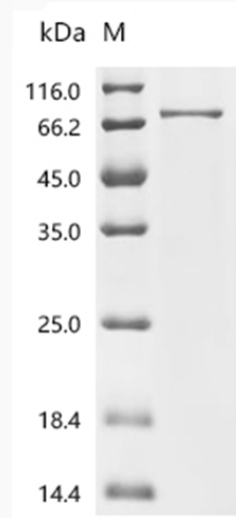
 Tel: 1-631-559-9269 1-516-512-3133

 Email: info@creative-biomart.com  Fax: 1-631-938-8127

 45-1 Ramsey Road, Shirley, NY 11967, USA

UniProt ID P31040

SDS-PAGE



 Tel: 1-631-559-9269 1-516-512-3133

 Email: info@creative-biomart.com  Fax: 1-631-938-8127

 45-1 Ramsey Road, Shirley, NY 11967, USA