

Recombinant Human SDHA Protein, His-SUMO-tagged

Cat. No. SDHA-1366H Lot. No. (See product label)

SPECIFICATION

Product Overview	Recombinant Human SDHA Protein (44-664aa) was expressed in E. coli with N-terminal His-SUMO tag.
Species	Human
Source	E.coli
ProteinLength	44-664 a.a.
Description	This gene encodes a major catalytic subunit of succinate-ubiquinone oxidoreductase, a complex of the mitochondrial respiratory chain. The complex is composed of four nuclear-encoded subunits and is localized in the mitochondrial inner membrane. Mutations in this gene have been associated with a form of mitochondrial respiratory chain deficiency known as Leigh Syndrome. A pseudogene has been identified on chromosome 3q29. Alternatively spliced transcript variants encoding different isoforms have been found for this gene.
Form	Tris-based buffer, 50% glycerol.
Molecular Mass	84.0 kDa
AA Sequence	SAKVSDSISAQYPVVDHEFDVAVVGAGGAGLRAAFGLSEAGFNTACVTKLFPTRSH TVAAQGGINAALGNMEEDNWRWHFYDTVKGSDWLGDQDAIHYMTEQAPAAVVELE NYGMPFSRTEDGKIYQRAFGGQSLKFGKGGQAHRCCCVADRTGHSLLHTLYGRSL RYDTSYFVEYFALDLLMENGECRGVIALCIEDGSIHRIRAKNTVVATGGYGRTYFSC

 Tel: 1-631-559-9269 1-516-512-3133

 Email: info@creative-biomart.com  Fax: 1-631-938-8127

 45-1 Ramsey Road, Shirley, NY 11967, USA

SAHTSTGDGTAMITRAGLPCQDLEFVQFHPTGIYGAGCLITEGCRGEGGILINSQGE
 RFMERYAPVAKDLASRDVVSRSMTLEIREGRGCGPEKDHVYLQLHHLPPPEQLATRL
 PGISETAMIFAGVDVTKEPIVLPVHYNMGGIPTNYKGQVLRHVNGQDQIVPGLYA
 CGEAACASVHGANRLGANSLLDLVVFGRACALSIEESCRPGDKVPPKPNAGEESV
 MNLDKLRFADGSIRTSELRLSMQKSMQNHAAVFRVGSVLQEGCGKISKLYGDLKHL
 KTFDRGMVWNTDLVETLELQNLMLCALQTIYGAEARKESRGAHAREDYKVRIDEYD
 YSKPIQGQKPKPFEEHWRKHTLSYVDVGTGKVTLEYRVIDKTLNEADCATVPPAIR
 SY

Purity Greater than 90% as determined by SDS-PAGE.

Storage The shelf life of liquid form is 6 months at -20 centigrade/-80 centigrade. The shelf life of lyophilized form is 12 months at -20 centigrade/-80 centigrade.

GENE INFORMATION

Gene Name [SDHA succinate dehydrogenase complex flavoprotein subunit A \[Homo sapiens \(human\) \]](#)

Official Symbol [SDHA](#)

Synonyms FP; PGL5; SDH1; SDH2; SDHF; CMD1GG

Gene ID [6389](#)

mRNA Refseq [NM_004168.3](#)

Protein Refseq [NP_004159.2](#)

MIM [600857](#)

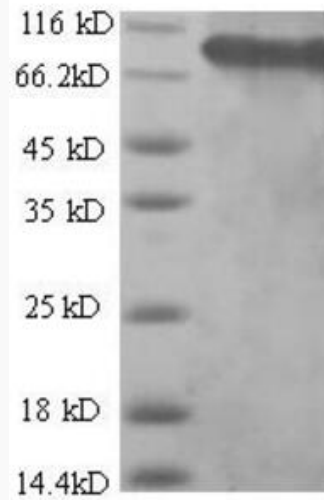
 Tel: 1-631-559-9269 1-516-512-3133

 Email: info@creative-biomart.com  Fax: 1-631-938-8127

 45-1 Ramsey Road, Shirley, NY 11967, USA

UniProt ID

P31040



 Tel: 1-631-559-9269 1-516-512-3133

 Email: info@creative-biomart.com  Fax: 1-631-938-8127

 45-1 Ramsey Road, Shirley, NY 11967, USA