

Recombinant Human SDHA Protein, GST-tagged

Cat. No. SDHA-1367H Lot. No. (See product label)

SPECIFICATION

Product Overview	Recombinant Human SDHA Protein (44-293aa) was expressed in E. coli with N-terminal GST tag.
Species	Human
Source	E.coli
ProteinLength	44-293 a.a.
Form	Tris-based buffer, 50% glycerol.
Molecular Mass	54.1 kDa
AA Sequence	SAKVSDSISAQYPVVDHEFDAVVVGAGGAGLRAAFGLSEAGFNTACVTKLFPTRSH TVAAQGGINAALGN MEEDNWRWHFYDTVKGSDWLGDQDAIHYMTEQAPAAVVELENYGMPFSRTEDGK IYQRAFGGQSLKFGKG GQAHRCCCVA DRTGHSLHTLYGRSLRYDTSYFVEYFALDLLMENGECR GVIALCIE DGSIH RIRAKNTV VATGGYGRTYFSCTSAHTSTGDGTAMITRAGLPCQDLEFV
Purity	Greater than 90% as determined by SDS-PAGE.
Storage	The shelf life of liquid form is 6 months at -20 centigrade/-80 centigrade. The shelf life of lyophilized form is 12 months at -20 centigrade/-80 centigrade.

 Tel: 1-631-559-9269 1-516-512-3133

 Email: info@creative-biomart.com  Fax: 1-631-938-8127

 45-1 Ramsey Road, Shirley, NY 11967, USA

GENE INFORMATION

Gene Name SDHA succinate dehydrogenase complex flavoprotein subunit A [Homo sapiens (human)]

Official Symbol SDHA

Synonyms FP; PGL5; SDH1; SDH2; SDHF; CMD1GG

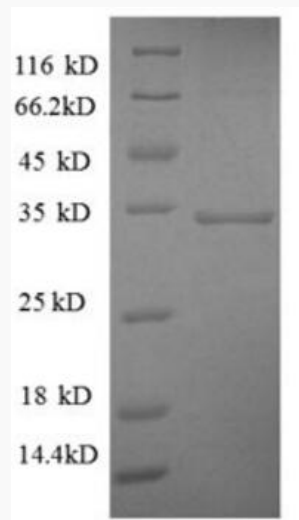
Gene ID 6389

mRNA Refseq NM_004168.3

Protein Refseq NP_004159.2

MIM 600857

UniProt ID P31040



 Tel: 1-631-559-9269 1-516-512-3133

 Email: info@creative-biomart.com  Fax: 1-631-938-8127

 45-1 Ramsey Road, Shirley, NY 11967, USA