

Recombinant Human SDHA Protein, His-tagged

Cat. No. SDHA-2676H Lot. No. (See product label)

SPECIFICATION

Product Overview	Recombinant Human SDHA Protein (Val4-Ile300) with a N-His tag was expressed in E. coli.
Species	Human
Source	E.coli
ProteinLength	Val4-Ile300
Description	This gene encodes a major catalytic subunit of succinate-ubiquinone oxidoreductase, a complex of the mitochondrial respiratory chain. The complex is composed of four nuclear-encoded subunits and is localized in the mitochondrial inner membrane. Mutations in this gene have been associated with a form of mitochondrial respiratory chain deficiency known as Leigh Syndrome. A pseudogene has been identified on chromosome 3q29. Alternatively spliced transcript variants encoding different isoforms have been found for this gene.
Form	Freeze-dried powder
Molecular Mass	Predicted Molecular Mass: 36.0 kDa Accurate Molecular Mass: 36 kDa
Endotoxin	<1.0 EU per 1g (determined by the LAL method).
Purity	> 97%

 Tel: 1-631-559-9269 1-516-512-3133

 Email: info@creative-biomart.com  Fax: 1-631-938-8127

 45-1 Ramsey Road, Shirley, NY 11967, USA

Applications	Positive Control; Immunogen; SDS-PAGE; WB.
Stability	The thermal stability is described by the loss rate. The loss rate was determined by accelerated thermal degradation test, that is, incubate the protein at 37 centigrade for 48h, and no obvious degradation and precipitation were observed. The loss rate is less than 5% within the expiration date under appropriate storage condition.
Storage	Avoid repeated freeze/thaw cycles. Store at 2-8 centigrade for one month. Aliquot and store at -80 centigrade for 12 months.
Storage Buffer	20mM Tris, 150mM NaCl, pH8.0, containing 1mM EDTA, 1mM DTT, 0.01% SKL, 5% Trehalose and Proclin300.
Reconstitution	Reconstitute in 20mM Tris, 150mM NaCl (pH8.0) to a concentration of 0.1-1.0 mg/mL. Do not vortex.

GENE INFORMATION

Gene Name	SDHA succinate dehydrogenase complex, subunit A, flavoprotein (Fp) [Homo sapiens (human)]
Official Symbol	SDHA
Synonyms	SDHA; succinate dehydrogenase complex, subunit A, flavoprotein (Fp); SDH2; succinate dehydrogenase [ubiquinone] flavoprotein subunit, mitochondrial; FP; SDHF; flavoprotein subunit of complex II; succinate dehydrogenase complex flavoprotein subunit; PGL5; SDH1; CMD1GG;
Gene ID	6389
mRNA Refseq	NM_004168

 Tel: 1-631-559-9269 1-516-512-3133

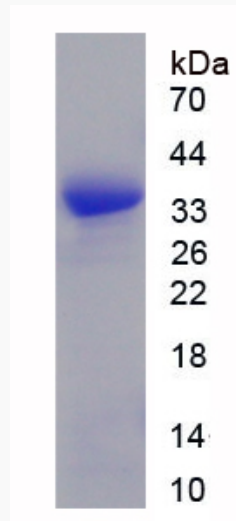
 Email: info@creative-biomart.com  Fax: 1-631-938-8127

 45-1 Ramsey Road, Shirley, NY 11967, USA

Protein Refseq NP_004159

MIM 600857

UniProt ID P31040



 Tel: 1-631-559-9269 1-516-512-3133

 Email: info@creative-biomart.com  Fax: 1-631-938-8127

 45-1 Ramsey Road, Shirley, NY 11967, USA