

Recombinant Human SDHAF2 Protein, Myc/DDK-tagged, C13 and N15-labeled

Cat. No. SDHAF2-5168H **Lot. No.** (See product label)

SPECIFICATION

Product Overview	SDHAF2 MS Standard C13 and N15-labeled recombinant protein (NP_060311) with a C-terminal MYC/DDK tag, was expressed in HEK293 cells.
Species	Human
Source	HEK293
Description	This gene encodes a mitochondrial protein needed for the flavination of a succinate dehydrogenase complex subunit required for activity of the complex. Mutations in this gene are associated with paraganglioma.
Molecular Mass	19.6 kDa
AA Sequence	MAVSTVFSTSSLMLALSRHSLLSPLLSVTSFRRFYRGDSPTDSQKDMIEIPLPPWQE RTDESIETKRARLLYESRKRGMLENCILLSLFAKEHLQHMTEKQLNLYDRLINEPSND WDIYYWATEAKPAPEIFENEVMALLRDFAKNKNKEQRLRAPDLEYLFEKPRTRTRPL EQKLISEEDLAANDILDYKDDDDKV
Purity	> 80% as determined by SDS-PAGE and Coomassie blue staining
Stability	Stable for 3 months from receipt of products under proper storage and handling conditions.
Storage	Store at -80 centigrade. Avoid repeated freeze-thaw cycles.

 Tel: 1-631-559-9269 1-516-512-3133

 Email: info@creative-biomart.com  Fax: 1-631-938-8127

 45-1 Ramsey Road, Shirley, NY 11967, USA

Concentration 50 µg/mL as determined by BCA

Storage Buffer 100 mM glycine, 25 mM Tris-HCl, pH 7.3.

GENE INFORMATION

Gene Name [SDHAF2 succinate dehydrogenase complex assembly factor 2 \[Homo sapiens \(human\) \]](#)

Official Symbol [SDHAF2](#)

Synonyms SDHAF2; succinate dehydrogenase complex assembly factor 2; C11orf79, chromosome 11 open reading frame 79, paraganglioma or familial glomus tumors 2, PGL2; succinate dehydrogenase assembly factor 2, mitochondrial; FLJ20487; SDH5; hSDH5; SDH assembly factor 2; succinate dehydrogenase subunit 5, mitochondrial; PGL2; C11orf79;

Gene ID [54949](#)

mRNA Refseq [NM_017841](#)

Protein Refseq [NP_060311](#)

MIM [613019](#)

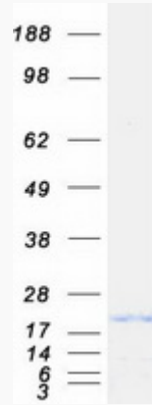
UniProt ID [Q9NX18](#)

 Tel: 1-631-559-9269 1-516-512-3133

 Email: info@creative-biomart.com  Fax: 1-631-938-8127

 45-1 Ramsey Road, Shirley, NY 11967, USA

SDS-PAGE



 Tel: 1-631-559-9269 1-516-512-3133

 Email: info@creative-biomart.com  Fax: 1-631-938-8127

 45-1 Ramsey Road, Shirley, NY 11967, USA