

Recombinant Human SDHB Protein, His-tagged

Cat. No. SDHB-2677H Lot. No. (See product label)

SPECIFICATION

Product Overview	Recombinant Human SDHB Protein (Glu95-Val280) with a N-His tag was expressed in E. coli.
Species	Human
Source	E.coli
ProteinLength	Glu95-Val280
Description	<p>This tumor suppressor gene encodes the iron-sulfur protein subunit of the succinate dehydrogenase (SDH) enzyme complex which plays a critical role in mitochondria. The SDH enzyme complex is composed of four nuclear-encoded subunits. This enzyme complex converts succinate to fumarate which releases electrons as part of the citric acid cycle, and the enzyme complex additionally provides an attachment site for released electrons to be transferred to the oxidative phosphorylation pathway. The SDH enzyme complex plays a role in oxygen-related gene regulation through its conversion of succinate, which is an oxygen sensor that stabilizes the hypoxia-inducible factor 1 (HIF1) transcription factor. Sporadic and familial mutations in this gene result in paragangliomas, pheochromocytoma, and gastrointestinal stromal tumors, supporting a link between mitochondrial dysfunction and tumorigenesis. Mutations in this gene are also implicated in nuclear type 4 mitochondrial complex II deficiency.</p>
Form	Freeze-dried powder

 Tel: 1-631-559-9269 1-516-512-3133

 Email: info@creative-biomart.com  Fax: 1-631-938-8127

 45-1 Ramsey Road, Shirley, NY 11967, USA

Molecular Mass	Predicted Molecular Mass: 25.0 kDa Accurate Molecular Mass: 25 kDa
Endotoxin	<1.0 EU per 1g (determined by the LAL method).
Purity	> 90%
Applications	Positive Control; Immunogen; SDS-PAGE; WB.
Stability	The thermal stability is described by the loss rate. The loss rate was determined by accelerated thermal degradation test, that is, incubate the protein at 37 centigrade for 48h, and no obvious degradation and precipitation were observed. The loss rate is less than 5% within the expiration date under appropriate storage condition.
Storage	Avoid repeated freeze/thaw cycles. Store at 2-8 centigrade for one month. Aliquot and store at -80 centigrade for 12 months.
Storage Buffer	20mM Tris, 150mM NaCl, pH8.0, containing 1mM EDTA, 1mM DTT, 0.01% SKL, 5% Trehalose and Proclin300.
Reconstitution	Reconstitute in 20mM Tris, 150mM NaCl (pH8.0) to a concentration of 0.1-1.0 mg/mL. Do not vortex.

GENE INFORMATION

Gene Name	SDHB succinate dehydrogenase complex, subunit B, iron sulfur (lp) [Homo sapiens (human)]
Official Symbol	SDHB
Synonyms	SDHB; succinate dehydrogenase complex, subunit B, iron sulfur (lp); SDH, SDH1;

 Tel: 1-631-559-9269 1-516-512-3133

 Email: info@creative-biomart.com  Fax: 1-631-938-8127

 45-1 Ramsey Road, Shirley, NY 11967, USA

succinate dehydrogenase [ubiquinone] iron-sulfur subunit, mitochondrial; iron-sulfur subunit of complex II; IP; SDH; PGL4; SDH1; SDH2; SDHIP; FLJ92337;

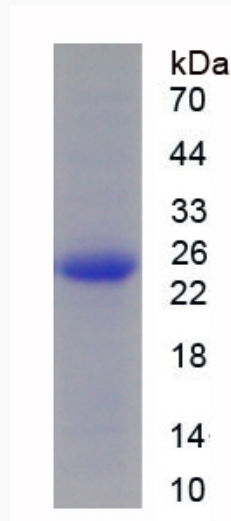
Gene ID 6390

mRNA Refseq NM_003000

Protein Refseq NP_002991

MIM 185470

UniProt ID P21912



 Tel: 1-631-559-9269 1-516-512-3133

 Email: info@creative-biomart.com  Fax: 1-631-938-8127

 45-1 Ramsey Road, Shirley, NY 11967, USA