

Recombinant Human SDR16C5 Protein, DYKDDDDK-tagged

Cat. No. SDR16C5-01H Lot. No. (See product label)

SPECIFICATION

Product Overview	Recombinant protein from the full-length sequence of Homo sapiens short chain dehydrogenase/reductase family 16C member 5 (SDR16C5), transcript variant 2 (NM_138969), with a DYKDDDDK tag was expressed in human cells.
Species	Human
Source	Human Cells
Description	This gene encodes a member of the short-chain alcohol dehydrogenase/reductase superfamily of proteins and is involved in the oxidation of retinol to retinaldehyde. The encoded protein is associated with the endoplasmic reticulum and is predicted to contain three transmembrane helices, suggesting that it is an integral membrane protein. It recognizes all-trans-retinol and all-trans-retinaldehyde as substrates and exhibits a strong preference for NAD(+)/NADH as cofactors. Alternative splicing results in multiple transcript variants.
Molecular Mass	33.9 kDa
Endotoxin	< 0.1 ng/μg of protein (<1 EU/μg)
Purity	> 90% by SDS-PAGE gel and Coomassie Blue staining
Applications	Antigens, Western, ELISA and other in vitro binding or in vivo functional assays, and protein-protein interaction studies; For research & development use only!

 Tel: 1-631-559-9269 1-516-512-3133

 Email: info@creative-biomart.com  Fax: 1-631-938-8127

 45-1 Ramsey Road, Shirley, NY 11967, USA

Storage Buffer Purified protein formulated in a sterile solution of TBS buffer, pH7.4, without any preservatives

GENE INFORMATION

Gene Name SDR16C5 short chain dehydrogenase/reductase family 16C member 5 [Homo sapiens (human)]

Official Symbol SDR16C5

Synonyms SDR16C5; short chain dehydrogenase/reductase family 16C member 5; RDH#2; RDHE2; EPHD-2; RDH-E2; retSDR2; epidermal retinol dehydrogenase 2; epidermal retinal dehydrogenase 2; retinal short chain dehydrogenase reductase; retinal short-chain dehydrogenase reductase 2; EC 1.1.1.105

Gene ID 195814

mRNA Refseq NM_138969

Protein Refseq NP_620419

MIM 608989

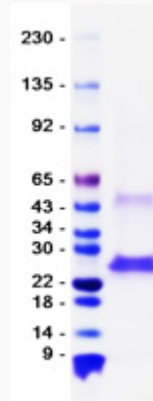
UniProt ID Q8N3Y7

 Tel: 1-631-559-9269 1-516-512-3133

 Email: info@creative-biomart.com  Fax: 1-631-938-8127

 45-1 Ramsey Road, Shirley, NY 11967, USA

SDS-PAGE



 Tel: 1-631-559-9269 1-516-512-3133

 Email: info@creative-biomart.com  Fax: 1-631-938-8127

 45-1 Ramsey Road, Shirley, NY 11967, USA