

Recombinant Human SDR16C5 Protein, Myc/DDK-tagged, C13 and N15-labeled

Cat. No. SDR16C5-1709H **Lot. No.** (See product label)

SPECIFICATION

Product Overview

SDR16C5 MS Standard C13 and N15-labeled recombinant protein (NP_620419) with a C-terminal MYC/DDK tag, was expressed in HEK293 cells.

Species

Human

Source

HEK293

Description

This gene encodes a member of the short-chain alcohol dehydrogenase/reductase superfamily of proteins and is involved in the oxidation of retinol to retinaldehyde. The encoded protein is associated with the endoplasmic reticulum and is predicted to contain three transmembrane helices, suggesting that it is an integral membrane protein. It recognizes all-trans-retinol and all-trans-retinaldehyde as substrates and exhibits a strong preference for NAD(+)/NADH as cofactors. Alternative splicing results in multiple transcript variants.

Molecular Mass

34.1 kDa

AA Sequence

MSFNLQSSKCLFIFLGKSLFSLLEAMIFALLPKPRKNVAGEIVLITGAGSGLGRLLALQ
 FARLGSVLVLWDINKEGNEETCKMAREAGATRVHAYTCDSCQKEGVYRVADQVKK
 EVGDVSIINNAGIVTGKKFLDCPDELMEKSFVNFKAHLWTYKAFLPAMIANDHGHL
 VCISSAGLSGVNGLADYCASKFAAFGFAESVVFVETVQKQKGIKTTIVCPFFIKTGM
 FEGCTTGCPSELLPILEPKYAVEKIVEAILQEKMVLYMPKLLYFMMFLKSFLPLKTGLLIA
 DYLGILHAMDGFVDQKKLTRTRPLEQKLISEEDLAANDILDYKDDDDKV

 Tel: 1-631-559-9269 1-516-512-3133

 Email: info@creative-biomart.com  Fax: 1-631-938-8127

 45-1 Ramsey Road, Shirley, NY 11967, USA

Purity	> 80% as determined by SDS-PAGE and Coomassie blue staining
Stability	Stable for 3 months from receipt of products under proper storage and handling conditions.
Storage	Store at -80 centigrade. Avoid repeated freeze-thaw cycles.
Concentration	50 µg/mL as determined by BCA
Storage Buffer	100 mM glycine, 25 mM Tris-HCl, pH 7.3.

GENE INFORMATION

Gene Name	SDR16C5 short chain dehydrogenase/reductase family 16C member 5 [Homo sapiens (human)]
Official Symbol	SDR16C5
Synonyms	SDR16C5; short chain dehydrogenase/reductase family 16C, member 5; epidermal retinol dehydrogenase 2; RDH E2; RDHE2; EPHD-2; retSDR2; epidermal retinal dehydrogenase 2; retinal short chain dehydrogenase reductase; retinal short-chain dehydrogenase reductase 2; short-chain dehydrogenase/reductase family 16C member 5; RDH#2; RDH-E2; FLJ33105;
Gene ID	195814
mRNA Refseq	NM_138969
Protein Refseq	NP_620419
MIM	608989

 Tel: 1-631-559-9269 1-516-512-3133

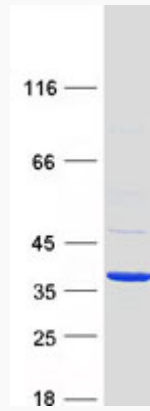
 Email: info@creative-biomart.com  Fax: 1-631-938-8127

 45-1 Ramsey Road, Shirley, NY 11967, USA

UniProt ID

Q8N3Y7

SDS-PAGE



 Tel: 1-631-559-9269 1-516-512-3133

 Email: info@creative-biomart.com  Fax: 1-631-938-8127

 45-1 Ramsey Road, Shirley, NY 11967, USA