

## Recombinant Human SDR42E1 Protein, GST-tagged

Cat. No. SDR42E1-5128H Lot. No. (See product label)

### SPECIFICATION

<b>Product Overview</b>	Human HSPC105 full-length ORF ( NP_660151.1, 1 a.a. - 383 a.a.) recombinant protein with GST-tag at N-terminal.
<b>Species</b>	Human
<b>Source</b>	Wheat Germ
<b>Description</b>	SDR42E1 (Short Chain Dehydrogenase/Reductase Family 42E, Member 1) is a Protein Coding gene. GO annotations related to this gene include oxidoreductase activity, acting on the CH-OH group of donors, NAD or NADP as acceptor and 3-beta-hydroxy-delta5-steroid dehydrogenase activity. An important paralog of this gene is SDR42E2.
<b>Molecular Mass</b>	69.6 kDa
<b>AA Sequence</b>	MDPKRSQKESVLITGGSGYFGFRLGICALNQNGVHVILFDISSPAQTIPEGIKFIQGGDIR HLSDVEKAFQDADVTCVFHIASYGMGREQLNRNLIKEVNVRGTDNILQVCQRRRV PRLVYTSTFNVIFGGQVIRNGDESLPYLPLHLHPDHYSRTKSIAEQKVLEANATPLDR GDGVLRTCALRPAGIYGPGEQRHLPRIVSYIEKGLFKFVYGDPRSLVEFVHVDNLVQ AHILASEALRADKGHIASGQPYFISDGRPVNNEFFRPLVEGLGYTFPSTRPLTLVY CFAFLTEMVHFILGRLYNFQPFLTRTEVYKTGVTHYFSLEKAKKELGYKAQPFDLQE AVEWFKAHGHGRSSGSRDSECFVWDGLLVFLIIAVLM
<b>Applications</b>	Enzyme-linked Immunoabsorbent Assay Western Blot (Recombinant protein)

 Tel: 1-631-559-9269 1-516-512-3133

 Email: [info@creative-biomart.com](mailto:info@creative-biomart.com)  Fax: 1-631-938-8127

 45-1 Ramsey Road, Shirley, NY 11967, USA

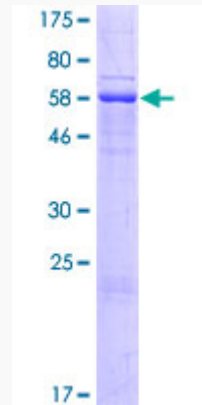
	Antibody Production Protein Array
<b>Notes</b>	Best use within three months from the date of receipt of this protein.
<b>Storage</b>	Store at -8 centigrade. Aliquot to avoid repeated freezing and thawing.
<b>Storage Buffer</b>	50 mM Tris-HCl, 10 mM reduced Glutathione, pH=8.0 in the elution buffer.
<b>GENE INFORMATION</b>	
<b>Gene Name</b>	SDR42E1 short chain dehydrogenase/reductase family 42E, member 1 [ Homo sapiens ]
<b>Official Symbol</b>	SDR42E1
<b>Synonyms</b>	HSPC105
<b>Gene ID</b>	93517
<b>mRNA Refseq</b>	NM_145168
<b>Protein Refseq</b>	NP_660151
<b>UniProt ID</b>	Q8WUS8

 Tel: 1-631-559-9269 1-516-512-3133

 Email: [info@creative-biomart.com](mailto:info@creative-biomart.com)  Fax: 1-631-938-8127

 45-1 Ramsey Road, Shirley, NY 11967, USA

**Quality Control  
Testing**



12.5% SDS-PAGE Stained with Coomassie Blue.

 Tel: 1-631-559-9269 1-516-512-3133

 Email: [info@creative-biomart.com](mailto:info@creative-biomart.com)  Fax: 1-631-938-8127

 45-1 Ramsey Road, Shirley, NY 11967, USA