

Recombinant Full Length Human SEC11C Protein, C-Flag-tagged

Cat. No. SEC11C-2069HFL **Lot. No.** (See product label)

SPECIFICATION

Product Overview	Recombinant Full Length Human SEC11C Protein, fused to Flag-tag at C-terminus, was expressed in Mammalian cells.
Species	Human
Source	Mammalian Cells
Description	Predicted to enable peptidase activity. Predicted to be involved in signal peptide processing. Predicted to be located in endoplasmic reticulum membrane. Predicted to be part of signal peptidase complex.
Form	25 mM Tris HCl, pH 7.3, 100 mM glycine, 10% glycerol.
Molecular Mass	21.4 kDa
AA Sequence	MVRAGAVGAHL PASGLDIFGDLKMKRQLYYQVLNFMIVSSALMIWKGLIVLTGS ESPIVVVLSGSME PAFHRGDLLFLTNFREDPIRAGEIVVFKVEGRDIPVHRVIKVHEK DNGDIKFLTKGDNNEVDDRGLYKE GQNWLEKKDVVGRARGFLPYVGMVTIIMNDY PKFKYALLAVMGAYVLLKRES TRTRPLEQKLISEEDLAANDILDYKDDDDKV
Purity	> 80% as determined by SDS-PAGE and Coomassie blue staining.
Stability	Stable for 12 months from the date of receipt of the product under proper storage and handling conditions. Avoid repeated freeze-thaw cycles.

 Tel: 1-631-559-9269 1-516-512-3133

 Email: info@creative-biomart.com  Fax: 1-631-938-8127

 45-1 Ramsey Road, Shirley, NY 11967, USA

Storage	Store at -80 centigrade.
Concentration	>50 ug/mL as determined by microplate BCA method.
Preparation	Recombinant protein was captured through anti-DDK affinity column followed by conventional chromatography steps.
Protein Families	Protease, Transmembrane
Protein Pathways	Protein export
Full Length	Full L.

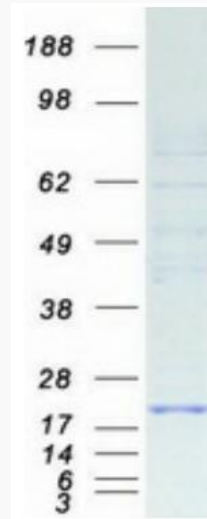
GENE INFORMATION

Gene Name	SEC11C SEC11 homolog C, signal peptidase complex subunit [Homo sapiens (human)]
Official Symbol	SEC11C
Synonyms	SPC21; SPCS4C; SEC11L3
Gene ID	90701
mRNA Refseq	NM_033280.4
Protein Refseq	NP_150596.1
UniProt ID	Q9BY50

 Tel: 1-631-559-9269 1-516-512-3133

 Email: info@creative-biomart.com  Fax: 1-631-938-8127

 45-1 Ramsey Road, Shirley, NY 11967, USA



Coomassie blue staining of purified SEC11C protein.

 Tel: 1-631-559-9269 1-516-512-3133

 Email: info@creative-biomart.com  Fax: 1-631-938-8127

 45-1 Ramsey Road, Shirley, NY 11967, USA