

Recombinant Human SEC13 protein, His-tagged

Cat. No. SEC13-5632H Lot. No. (See product label)

SPECIFICATION

Product Overview	Recombinant Human SEC13 protein(1-325 aa), fused with N-terminal His tag, was expressed in E. coli.
Species	Human
Source	E.coli
ProteinLength	1-325 aa
Form	The purified protein was Lyophilized from sterile PBS (58mM Na ₂ HPO ₄ , 17mM NaH ₂ PO ₄ , 68mM NaCl, pH7.4). 5 % trehalose and 5 % mannitol are added as protectant before lyophilization.
Storage	Short-term storage: Store at 2-8°C for (1-2 weeks). Long-term storage: Aliquot and store at -20°C to -80°C for up to 3 months, reconstitution with sterile water and addition of an equal volume of glycerol. Avoid repeat freeze-thaw cycles.
AA Sequence	MGKMVSVINTVDTSHEDMIHDAQMDYYGTRLATCSSDRSVKIFDVRNNGGQILIADLR GHEGPVWQVAWAHPMYGNILASCSYDRKVIIWREENGWWEKSHEHAGHDSSVNSV CWAPHDYGLILACGSSDGAISLLTYTGEGQWEVKKINNAHTIGCNAVSWAPAVVPG SLIDHPGQKPNYIKRFASGGCDNLIKLVKEEEDGQWKEEQKLEAHSDDWVRDVAW APSIGLPTSTIASCSQDGRVFIWTCDDASSNTWSPKLLHKFNDVVWHVSWVSITANILA VSGGDNKVTLWKESVDGQWVCISDVNKGQGSVSASVTEGQQNEQ
Purity	85%, by SDS-PAGE with Coomassie Brilliant Blue staining.

 Tel: 1-631-559-9269 1-516-512-3133

 Email: info@creative-biomart.com  Fax: 1-631-938-8127

 45-1 Ramsey Road, Shirley, NY 11967, USA

GENE INFORMATION

Official Symbol [SEC13](#)

Synonyms

SEC13; SEC13 homolog (S. cerevisiae); D3S1231E, SEC13 (S. cerevisiae) like 1 , SEC13 like 1 (S. cerevisiae) , SEC13L1; protein SEC13 homolog; npp 20; SEC13R; SEC13-like 1 isoform; SEC13-like protein 1; SEC13-related protein; npp-20; SEC13L1; D3S1231E;

Gene ID [6396](#)

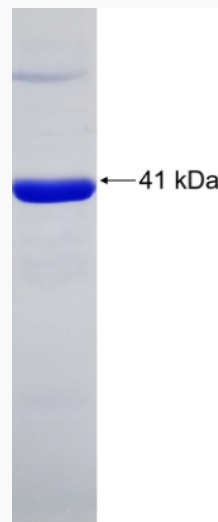
mRNA Refseq [NM_001136232](#)

Protein Refseq [NP_001129704](#)

MIM [600152](#)

UniProt ID [P55735](#)

SDS-PAGE



 Tel: 1-631-559-9269 1-516-512-3133

 Email: info@creative-biomart.com  Fax: 1-631-938-8127

 45-1 Ramsey Road, Shirley, NY 11967, USA