

Recombinant Human SEC22A Protein, Myc/DDK-tagged, C13 and N15-labeled

Cat. No. SEC22A-2354H **Lot. No.** (See product label)

SPECIFICATION

Product Overview	SEC22A MS Standard C13 and N15-labeled recombinant protein (NP_036562) with a C-terminal MYC/DDK tag, was expressed in HEK293 cells.
Species	Human
Source	HEK293
Description	The protein encoded by this gene belongs to the member of the SEC22 family of vesicle trafficking proteins. This protein has similarity to rat SEC22 and may act in the early stages of the secretory pathway.
Molecular Mass	34.9 kDa
AA Sequence	MSMILSASVIRVRDGLPLSASTDYEQSTGMQECKRYFKMLSRKLAQLPDRCTLKTG HYNINFISSLGVSMMMLCTENYPNVLAFLDELQKEFITTYNMMKTNTAVRPYCFIE FDNFIQRTKQRYNNPRSLSTKINLSDMQTEIKLRPPYQISMCELGSANGVTSAFSVD CKGAGKISSAHQRLEPATLSGIVGFILSLGALNLIRGFHAIESLLQSDGDDFNIIAF FLGTAACLYQCYLLVYYTGWRNVKSFLTFGLICLNMYLYELRNWQLFFHVTVGAF VTLQIWLRLQAQGKAPDYDVTRTRPLEQKLISEEDLAANDILDYKDDDDKV
Purity	> 80% as determined by SDS-PAGE and Coomassie blue staining
Stability	Stable for 3 months from receipt of products under proper storage and handling conditions.

 Tel: 1-631-559-9269 1-516-512-3133

 Email: info@creative-biomart.com  Fax: 1-631-938-8127

 45-1 Ramsey Road, Shirley, NY 11967, USA

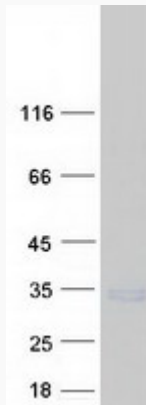
Storage	Store at -80 centigrade. Avoid repeated freeze-thaw cycles.
Concentration	50 µg/mL as determined by BCA
Storage Buffer	100 mM glycine, 25 mM Tris-HCl, pH 7.3.
GENE INFORMATION	
Gene Name	SEC22A SEC22 homolog A, vesicle trafficking protein [Homo sapiens (human)]
Official Symbol	SEC22A
Synonyms	SEC22A; SEC22 vesicle trafficking protein homolog A (S. cerevisiae); SEC22 vesicle trafficking protein like 2 (S. cerevisiae), SEC22L2; vesicle-trafficking protein SEC22a; sec22 homolog; SEC22 vesicle trafficking protein-like 2; SEC22 vesicle-trafficking protein-like 2; SEC22 vesicle-trafficking protein homolog A; SEC22L2;
Gene ID	26984
mRNA Refseq	NM_012430
Protein Refseq	NP_036562
MIM	612442
UniProt ID	Q96IW7

 Tel: 1-631-559-9269 1-516-512-3133

 Email: info@creative-biomart.com  Fax: 1-631-938-8127

 45-1 Ramsey Road, Shirley, NY 11967, USA

SDS-PAGE



 Tel: 1-631-559-9269 1-516-512-3133

 Email: info@creative-biomart.com  Fax: 1-631-938-8127

 45-1 Ramsey Road, Shirley, NY 11967, USA