

Recombinant Human SEC23A protein, GST-tagged

Cat. No. SEC23A-7855H Lot. No. (See product label)

SPECIFICATION

Product Overview	Recombinant Human SEC23A protein(660-765 aa), fused with N-terminal GST tag, was expressed in E.coli.
Species	Human
Source	E.coli
ProteinLength	660-765 aa
Form	The purified protein was lyophilized from sterile phosphate-buffered saline (PBS: 58 mM Na ₂ HPO ₄ , 17 mM NaH ₂ PO ₄ , 68 mM NaCl, pH 8.0). Prior to lyophilization, 5% (w/v) trehalose and 5% (w/v) mannitol were incorporated as cryoprotective excipients.
AASequence	HGETIAQWRKSGYQDMPEYENFRHLLQAPVDDAQEILHSRFPMPRYIDTEHGGSSQA RFLLSKVNPSQTHNNMYAWGQESGAPILTDDVSLQVFM DHLK KLA VSSAA
Purity	85%, by SDS-PAGE with Coomassie Brilliant Blue staining.
Storage	Store at 2-8°C for 1-2 weeks. Aliquot and store at -20°C to -80°C for up to 3 months, reconstitution with sterile water and addition of an equal volume of glycerol. Avoid repeat freeze-thaw cycles.
Reconstitution	Dissolve the product in 200 µl sterile water to achieve a working concentration of 0.25 g/

 Tel: 1-631-559-9269 1-516-512-3133

 Email: info@creative-biomart.com  Fax: 1-631-938-8127

 45-1 Ramsey Road, Shirley, NY 11967, USA



µl. If experimental compatibility allows, mix the aqueous solution with an equal volume of glycerol (1:1 ratio) after initial reconstitution.

GENE INFORMATION

Gene Name	SEC23A Sec23 homolog A (<i>S. cerevisiae</i>) [<i>Homo sapiens</i>]
Official Symbol	SEC23A
Synonyms	SEC23A; Sec23 homolog A (<i>S. cerevisiae</i>); Sec23 (<i>S. cerevisiae</i>) homolog A; protein transport protein Sec23A; SEC23-related protein A; CLSD; MGC26267;
Gene ID	10484
mRNA Refseq	NM_006364
Protein Refseq	NP_006355
MIM	610511
UniProt ID	Q15436

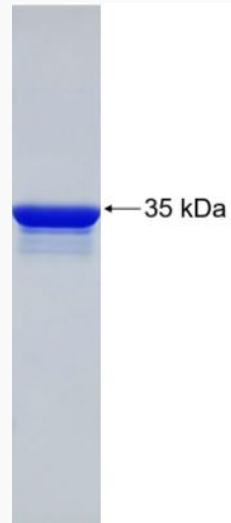
 Tel: 1-631-559-9269 1-516-512-3133

 Email: info@creative-biomart.com  Fax: 1-631-938-8127

 45-1 Ramsey Road, Shirley, NY 11967, USA



SDS-PAGE



Tel: 1-631-559-9269 1-516-512-3133

Email: info@creative-biomart.com Fax: 1-631-938-8127

45-1 Ramsey Road, Shirley, NY 11967, USA