

# Recombinant Human SEC23A Protein, Myc/DDK-tagged, C13 and N15-labeled

Cat. No. SEC23A-802H Lot. No. (See product label)

## SPECIFICATION

### Product Overview

SEC23A MS Standard C13 and N15-labeled recombinant protein (NP\_006355) with a C-terminal MYC/DDK tag, was expressed in HEK293 cells.

### Species

Human

### Source

HEK293

### Description

The protein encoded by this gene is a member of the SEC23 subfamily of the SEC23/SEC24 family. It is part of a protein complex and found in the ribosome-free transitional face of the endoplasmic reticulum (ER) and associated vesicles. This protein has similarity to yeast Sec23p component of COPII. COPII is the coat protein complex responsible for vesicle budding from the ER. The encoded protein is suggested to play a role in the ER-Golgi protein trafficking.

### Molecular Mass

86.2 kDa

### AA Sequence

MTTYLEFIQQNEERDGVRFSSWNVWPSSRLEATRMVVPVAALFTPLKERPDLPPIQY  
 EPVLCSTRTTCRAVLNPLCQVDYRAKLWACNFCYQRNQFPSPYAGISELNQPAELLP  
 QFSSIEYVVLGRPQMPLIFLYVVDTCMEDEDLQALKESMQMSLSLLPPTALVGLITFG  
 RMVQVHELGCESISYVFRGTDLSAKQLQEMLGLSKVPVTQATRGPVQVQPPPP  
 SNRFLQPVQKIDMNLTDLLGELQRDPWPVPQGKRPLRSSGVALSIAVGLLECTFPNT  
 GARIMMFIGGPATQGGPMVVGDELKTPIRSWHDIDKDNAKYVKKGTKHFEALANRA  
 ATTGHVIDIYACALDQTGLLEMKCCPNLTGGYMVMGDSFNLSLFKQTFQRVFTKDM

 Tel: 1-631-559-9269 1-516-512-3133

 Email: [info@creative-biomart.com](mailto:info@creative-biomart.com)  Fax: 1-631-938-8127

 45-1 Ramsey Road, Shirley, NY 11967, USA

HGQFKMGFGGTTLEIKTSREIKISGAIGPCVSLNSKGPCVSENEIGTGGTCQWKICGLS  
 PTTTLAIYFEVVNQHNAPIPQGGRGAIQFVTQYQHSSGQRRIRVTTIARNWADAQTQI  
 QNIAASFDQEAAILMARLAIYRAETEEGPDVLRWLDRQLIRLCQKFGHEYHKDDPSS  
 FRFSETFSLYPQFMFHLRRSSFLQVFNNSPDESSYYRHHFMRQDLTQSLIMIPIY  
 AYSFSGPPEPVLLDSSSILADRILLMDTFFQILYHGETIAQWRKSGYQDMPEYENFR  
 HLLQAPVDDAQEILHSRFPMPRYIDTEHGGSQARFLLSKVNPSTHNNMYAWGQES  
 GAPILTDDVSLQVFMHDLKKLAVSSAATRTRPLEQKLISEEDLAANDILDYKDDDDKV

**Purity** > 80% as determined by SDS-PAGE and Coomassie blue staining

**Stability** Stable for 3 months from receipt of products under proper storage and handling conditions.

**Storage** Store at -80 centigrade. Avoid repeated freeze-thaw cycles.

**Concentration** 50 µg/mL as determined by BCA

**Storage Buffer** 100 mM glycine, 25 mM Tris-HCl, pH 7.3.

## GENE INFORMATION

**Gene Name** SEC23A SEC23 homolog A, COPII coat complex component [ Homo sapiens (human) ]

**Official Symbol** SEC23A

**Synonyms** SEC23A; Sec23 homolog A (S. cerevisiae); Sec23 (S. cerevisiae) homolog A; protein transport protein Sec23A; SEC23-related protein A; CLSD; MGC26267;

**Gene ID** 10484

 Tel: 1-631-559-9269 1-516-512-3133

 Email: [info@creative-biomart.com](mailto:info@creative-biomart.com)  Fax: 1-631-938-8127

 45-1 Ramsey Road, Shirley, NY 11967, USA

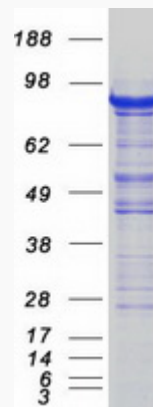
mRNA Refseq [NM\\_006364](#)

Protein Refseq [NP\\_006355](#)

MIM [610511](#)

UniProt ID [Q15436](#)

SDS-PAGE



Tel: 1-631-559-9269 1-516-512-3133

Email: [info@creative-biomart.com](mailto:info@creative-biomart.com) Fax: 1-631-938-8127

45-1 Ramsey Road, Shirley, NY 11967, USA