

Recombinant Human SEC23B Protein, Myc/DDK-tagged, C13 and N15-labeled

Cat. No. SEC23B-1667H **Lot. No.** (See product label)

SPECIFICATION

Product Overview	SEC23B MS Standard C13 and N15-labeled recombinant protein (NP_116780) with a C-terminal MYC/DDK tag, was expressed in HEK293 cells.
Species	Human
Source	HEK293
Description	The protein encoded by this gene is a member of the SEC23 subfamily of the SEC23/SEC24 family, which is involved in vesicle trafficking. The encoded protein has similarity to yeast Sec23p component of COPII. COPII is the coat protein complex responsible for vesicle budding from the ER. The function of this gene product has been implicated in cargo selection and concentration. Multiple alternatively spliced transcript variants have been identified in this gene.
Molecular Mass	86.5 kDa
AA Sequence	MATYLEFIQQNEERDGVRFSWNVWPSSRLEATRMVVPLACLLTPLKERPDLPVQY EPVLC SRPTCKAVLNPLCQVDYRAKLWACNFCFQRNQFPAYGGISEVNP AELMP QFSTIEYVIQRGAQSPLIFLYVVDTCLEEDDLQALKESLQMSLSLLPPDALVGLITFGR MVQVHELSC EGISKS YVFRGTKDLTAKQIQDMLGLTKPAMPMQQARPAQPQEHPFA SSRFLQPVHKIDMNLTDLLGELQRDPWPVTQGKRPLRSTGVALSIAVGLLEGTFPNT GARIMLFTGGPPTQGGPMVVGDELKIPIRSWHDIEKDNARFMKKATKHYEMLANRT AANGHCIDIYACALDQTGLLEMKCCANLTGGYMVMGDSFNLSLFKQTFQRIFTKDFN

 Tel: 1-631-559-9269 1-516-512-3133

 Email: info@creative-biomart.com  Fax: 1-631-938-8127

 45-1 Ramsey Road, Shirley, NY 11967, USA



GDFRMAFGATLDVKTSRELKIAGAIGPCVSLNVKGLCVSENELGVGGTSQWKICGLD
PTSTLGIYFEVVNQHNTPIPQGGRGAIQFVTHYQHSSTQRRIRVTTIARNWADVQSQ
LRHIEAAFDQEAAAFLMARLGVFRAESEEGPDVLRWLDRQLRLCQKFGQYNKEDP
TSFRLSDSFSLYPQFMFHLRRSPFLQVFNNSPDESSYYRHHFARQDLTQSLIMIQPIL
YSYSFHGPPEPVLLDSSSILADRILLMDTFFQIVIYLGETIAQWRKAGYQDMPEYENF
KHLLQAPLDDAQEILQARFPMPLYINTEHGGSQARFLLSKVNPSQTHNNLYAWGQE
TGAPILTDDVSLQVFMHLLKLAIVSSACTRTRPLEQKLISEEDLAANDILDYKDDDDK
V

Purity	> 80% as determined by SDS-PAGE and Coomassie blue staining
Stability	Stable for 3 months from receipt of products under proper storage and handling conditions.
Storage	Store at -80 centigrade. Avoid repeated freeze-thaw cycles.
Concentration	50 µg/mL as determined by BCA
Storage Buffer	100 mM glycine, 25 mM Tris-HCl, pH 7.3.

GENE INFORMATION

Gene Name	SEC23B SEC23 homolog B, COPII coat complex component [Homo sapiens (human)]
Official Symbol	SEC23B
Synonyms	SEC23B; Sec23 homolog B (S. cerevisiae); CDAN2, congenital dyserythropoietic anemia, type II, Sec23 (S. cerevisiae) homolog B; protein transport protein Sec23B; CDA II; CDAIL; HEMPAS; SEC23-like protein B; SEC23-related protein B; transport protein SEC23B; CDAN2; CDA-II;

Tel: 1-631-559-9269 1-516-512-3133

Email: info@creative-biomart.com Fax: 1-631-938-8127

45-1 Ramsey Road, Shirley, NY 11967, USA

Gene ID 10483

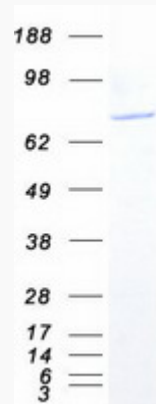
mRNA Refseq NM_032985

Protein Refseq NP_116780

MIM 610512

UniProt ID Q15437

SDS-PAGE



 Tel: 1-631-559-9269 1-516-512-3133

 Email: info@creative-biomart.com  Fax: 1-631-938-8127

 45-1 Ramsey Road, Shirley, NY 11967, USA