

# Recombinant Human SEC23B Protein, Myc/DDK-tagged, C13 and N15-labeled

Cat. No. SEC23B-2062H Lot. No. (See product label)

## SPECIFICATION

|                         |  |
|-------------------------|--|
| <b>Product Overview</b> | SEC23B MS Standard C13 and N15-labeled recombinant protein (NP_116781) with a C-terminal MYC/DDK tag, was expressed in HEK293 cells.   |
| <b>Species</b>          | Human  |
| <b>Source</b>           | HEK293   |
| <b>Description</b>      | The protein encoded by this gene is a member of the SEC23 subfamily of the SEC23/SEC24 family, which is involved in vesicle trafficking. The encoded protein has similarity to yeast Sec23p component of COPII. COPII is the coat protein complex responsible for vesicle budding from the ER. The function of this gene product has been implicated in cargo selection and concentration. Multiple alternatively spliced transcript variants have been identified in this gene. |
| <b>Molecular Mass</b>   | 86.3 kDa   |
| <b>AA Sequence</b>      | MATYLEFIQQNEERDGVRFSWNVWPSSRLEATRMVVPLACLLTPLKERPDLPVQY<br>EPVLC SRPTCKAVLNPLCQVDYRAKLWACNFCFQRNQFPAYGGISEVNP AELMP<br>QFSTIEYVIQRGAQSPLIFLYVVDTCLEEDDLQALKESLQMSLSLLPPDALVGLITFGR<br>MVQVHELSC EGISKS YVFRGTKDLTAKQIQDMLGLTKPAMPMQQARPAQPQEHPFA<br>SSRFLQPVHKIDMNLTDLLGELQRDPWPVTQGKRPLRSTGVALSIAVGLLEGTFPNT<br>GARIMLFTGGPPTQGGPMVVGDELKIPRSWHDIEKDNARFMKKATKHYEMLANRT<br>AANGHCIDIYACALDQTGLLEMKCCANLTGGYMVMGDSFNLSLFKQTFQRIFTKDFN  |

 Tel: 1-631-559-9269 1-516-512-3133

 Email: [info@creative-biomart.com](mailto:info@creative-biomart.com)  Fax: 1-631-938-8127

 45-1 Ramsey Road, Shirley, NY 11967, USA

GDFRMAFGATLDVKTSRELKIAGAIGPCVSLNVKGPCVSENELGVGGTSQWKICGL  
 DPTSTLGIYFEVVNQHNTPIPQGGRGAIQFVTHYQHSSTQRRIRVTTIARNWADVQS  
 QLRHIEAAFDQEA-AAVLMARLGVFRAESEEGPDVLRWLDRLQLRLCQKFGQYNKED  
 PTSFRLSDSFSLYPQFMFHLRRSPFLQVFNNSPDESSYYRHHFARQDLTQSLIMIQPI  
 LYSYSFHGPPEPVLLDSSSILADRILLMDTFFQIVIYLGETIAQWRKAGYQDMPEYENF  
 KHLLQAPLDDAQEILQARFPMPLYINTEHGGSQARFLLSKVNPSQTHNNLYAWGQE  
 TGAPILTDDVSLQVFMHLLKLA VSSACTRTRPLEQKLISEEDLAANDILDYKDDDDK  
 V

|                       |  |
|-----------------------|--|
| <b>Purity</b>         | > 80% as determined by SDS-PAGE and Coomassie blue staining                                |
| <b>Stability</b>      | Stable for 3 months from receipt of products under proper storage and handling conditions. |
| <b>Storage</b>        | Store at -80 centigrade. Avoid repeated freeze-thaw cycles.                                |
| <b>Concentration</b>  | 50 µg/mL as determined by BCA  |
| <b>Storage Buffer</b> | 100 mM glycine, 25 mM Tris-HCl, pH 7.3.  |

## GENE INFORMATION

|                        |   |
|------------------------|---|
| <b>Gene Name</b>       | SEC23B SEC23 homolog B, COPII coat complex component [ Homo sapiens (human) ]   |
| <b>Official Symbol</b> | SEC23B  |
| <b>Synonyms</b>        | SEC23B; Sec23 homolog B (S. cerevisiae); CDAN2, congenital dyserythropoietic anemia, type II, Sec23 (S. cerevisiae) homolog B; protein transport protein Sec23B; CDA II; CDAIL; HEMPAS; SEC23-like protein B; SEC23-related protein B; transport protein SEC23B; CDAN2; CDA-II; |

 Tel: 1-631-559-9269 1-516-512-3133

 Email: [info@creative-biomart.com](mailto:info@creative-biomart.com)  Fax: 1-631-938-8127

 45-1 Ramsey Road, Shirley, NY 11967, USA

**Gene ID** 10483

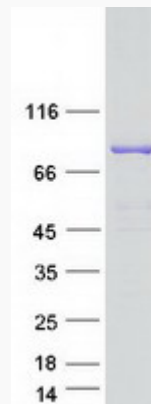
**mRNA Refseq** NM\_032986


**Protein Refseq** NP\_116781

**MIM** 610512

**UniProt ID** Q15437

**SDS-PAGE**



 Tel: 1-631-559-9269 1-516-512-3133

 Email: [info@creative-biomart.com](mailto:info@creative-biomart.com)  Fax: 1-631-938-8127

 45-1 Ramsey Road, Shirley, NY 11967, USA