

Recombinant Human SEC23B Protein, Myc/DDK-tagged, C13 and N15-labeled

Cat. No. SEC23B-4144H Lot. No. (See product label)

SPECIFICATION

Product Overview

SEC23B MS Standard C13 and N15-labeled recombinant protein (NP_006354) with a C-terminal MYC/DDK tag, was expressed in HEK293 cells.

Species

Human

Source

HEK293

Description

The protein encoded by this gene is a member of the SEC23 subfamily of the SEC23/SEC24 family, which is involved in vesicle trafficking. The encoded protein has similarity to yeast Sec23p component of COPII. COPII is the coat protein complex responsible for vesicle budding from the ER. The function of this gene product has been implicated in cargo selection and concentration. Multiple alternatively spliced transcript variants have been identified in this gene.

Molecular Mass

86.5 kDa

AA Sequence

MATYLEFIQQNEERDGVRFSWNVWPSSRLEATRMVVPLACLLTPLKERPDLPVQY
 EPVLC SRPTCKAVLNPLCQVDYRAKLWACNFCFQRNQFPAYGGISEVNP AELMP
 QFSTIEYVIQRGAQSPLIFLYVVDTCLEEDDLQALKESLQMSLSLLPPDALVGLITFGR
 MVQVHELSC EGISKS YVFRGTKDLTAKQIQDMLGLTKPAMPMQQARPAQPQEHPFA
 SSRFLQPVHKIDMNLTDLLGELQRDPWPVTQGKRPLRSTGVALSIAVGLLEGTFPNT
 GARIMLFTGGPPTQGGPMVVGDELKIPRSWHDIEKDNARFMKKATKHYEMLANRT
 AANGHCIDIYACALDQTGLLEMKCCANLTGGYMVMGDSFNLSLFKQTFQRIFTKDFN

 Tel: 1-631-559-9269 1-516-512-3133

 Email: info@creative-biomart.com  Fax: 1-631-938-8127

 45-1 Ramsey Road, Shirley, NY 11967, USA

GDFRMAFGATLDVKTSRELKIAGAIGPCVSLNVKGLCVSENELGVGGTSQWKICGLD
 PTSTLGIYFEVVNQHNTPIPQGGRGAIQFVTHYQHSSTQRRIRVTTIARNWADVQSQ
 LRHIEAAFDQEAAAFLMARLGVFRAESEEGPDVLRWLDRQLRLCQKFGQYNKEDP
 TSFRLSDSFSLYPQFMFHLRRSPFLQVFNNSPDESSYYRHHFARQDLTQSLIMIQPIL
 YSYSFHGPPEPVLLDSSSILADRILLMDTFFQIVIYLGETIAQWRKAGYQDMPEYENF
 KHLQLAPLDDAQEILQARFPMPLYINTEHGGSQARFLLSKVNPSQTHNNLYAWGQE
 TGAPILTDDVSLQVFMHLLKLAIVSSACTRTRPLEQKLISEEDLAANDILDYKDDDDK
 V

Purity > 80% as determined by SDS-PAGE and Coomassie blue staining

Stability Stable for 3 months from receipt of products under proper storage and handling conditions.

Storage Store at -80 centigrade. Avoid repeated freeze-thaw cycles.

Concentration 50 µg/mL as determined by BCA

Storage Buffer 100 mM glycine, 25 mM Tris-HCl, pH 7.3.

GENE INFORMATION

Gene Name SEC23B SEC23 homolog B, COPII coat complex component [Homo sapiens (human)]

Official Symbol SEC23B

Synonyms SEC23B; Sec23 homolog B (S. cerevisiae); CDAN2, congenital dyserythropoietic anemia, type II, Sec23 (S. cerevisiae) homolog B; protein transport protein Sec23B; CDA II; CDAIL; HEMPAS; SEC23-like protein B; SEC23-related protein B; transport protein SEC23B; CDAN2; CDA-II;

 Tel: 1-631-559-9269 1-516-512-3133

 Email: info@creative-biomart.com  Fax: 1-631-938-8127

 45-1 Ramsey Road, Shirley, NY 11967, USA

Gene ID 10483

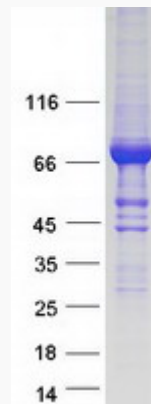
mRNA Refseq NM_006363

Protein Refseq NP_006354

MIM 610512

UniProt ID Q15437

SDS-PAGE



Tel: 1-631-559-9269 1-516-512-3133

Email: info@creative-biomart.com Fax: 1-631-938-8127

45-1 Ramsey Road, Shirley, NY 11967, USA