

Recombinant Full Length Human SEC31A Protein, C-Flag-tagged

Cat. No. SEC31A-1880HFL **Lot. No.** (See product label)

SPECIFICATION

Product Overview	Recombinant Full Length Human SEC31A Protein, fused to Flag-tag at C-terminus, was expressed in Mammalian cells.
Species	Human
Source	Mammalian Cells
Description	The protein encoded by this gene shares similarity with the yeast Sec31 protein, and is a component of the outer layer of the coat protein complex II (COPII). The encoded protein is involved in vesicle budding from the endoplasmic reticulum (ER) and contains multiple WD repeats near the N-terminus and a proline-rich region in the C-terminal half. It associates with the protein encoded by the SEC13 homolog, nuclear pore and COPII coat complex component (SEC13), and is required for ER-Golgi transport. Monoubiquitylation of this protein by CUL3-KLHL12 was found to regulate the size of COPII coats to accommodate unusually shaped cargo. Alternative splicing results in multiple transcript variants encoding different isoforms.
Form	25 mM Tris HCl, pH 7.3, 100 mM glycine, 10% glycerol.
Molecular Mass	131.4 kDa
AA Sequence	MKLKEVDRTAMQAWSPAQNHPIYLATGTSAAQLDATFSTNASLEIFELDLSDPSLDM KSCATFSSSHRYH KLIWGPYKMDSKGDVSGVLIAGGENGNIIYDPSKIIAGDKEVVI AQNDKHTGPVRALDVNIFQTNLVAS GANESEIYWDLNNFATPMTTPGAKTQPPEDIS

 Tel: 1-631-559-9269 1-516-512-3133

 Email: info@creative-biomart.com  Fax: 1-631-938-8127

 45-1 Ramsey Road, Shirley, NY 11967, USA

CIAWNRQVQHILASASPSGRATVWDLRKNEPIIKVSDH SNRMHCSGLAWHPDVAT
 QMVLASEDDRLPVIQMWDLRFASSPLRVLENHARGILAIAWSMADPELLLSCG KDA
 KILCSNPNTGEVLYELPTNTQWCFDIQWCPRNPAVLSAASFDGRISVYSIMGGSTDG
 LRQKQVDKLS SSFGNLDPFGTGQPLPPLQIPQQTQAHSIVLPLKKPPKWIRRPVGAS
 FSFGGKLVTFENVRMPHQGAEQ QQQQHVFISQVVTEKEFLSRSDQLQAVQS
 QGFINYCQKKIDASQTEFEKNVWSFLKVNFEEDSRGKYL ELLGYRKEDLGKKIALAL
 NKVDGANVALKDSQVAQSDGEESPAEEQLLGEHIKEEKEESEFLPSSGGT FNIS
 VSGDIDGLITQALLTGNFESAVDLCLHDNRMADAIIAIAGGQELLARTQKKYFAKSQS
 KITRLIT AVVMKNWKEIVESCDLKNWREALAAVLTYAKPDEFSALCDLLGTRLENEG
 DSLLQTQACLICYICAGNVEK LVACWTKAQDGSHPHLSLQDLIEKVVILRKAVQLTQAM
 DTSTVGVLLAAKMSQYANLLAAQGSIAAALAFD PDNTNQPNIMQLRDLRCRAQGEP
 VAGHESPKIPYEKQQLPKGRPGPVAGHHQMPRVQTQQYYPHGENPPP PGFIMHG
 NVNPNAAGQLPTSPGHMHTQVPPYPQPYPYQPAQYPYFPGTGGSAMYRPQQPVAP
 PTSNAYPNT PYISSASSYTGQSQLYAAQHQASSPTSSPATSFPPPPSSGASFQHGG
 PGAPPSSSAYALPPGTTGPQNGW NDPPALNRVPKPKKMPENFMPPVPITSPIMNPL
 GDPQSQMLQQQPSAPVPLSSQSSFPQPHLPGGQPFHG VQQPLGQTGMPPSFSKP
 NIEGAPGAPIGNTFQHVQSLPTKKITKKPIPDEHLILKTTFEDLIQRCLSSAT DPQTKR
 KLDDASKRLEFLYDKLREQTLSPITISGLHNIARSIETRNYSGLTMHTHIVSTSNFSE
 TSAFM PVLKVVLQANKLGV TRTRPLEQKLISEEDLAANDILDYKDDDDKV

Purity	> 80% as determined by SDS-PAGE and Coomassie blue staining.
Stability	Stable for 12 months from the date of receipt of the product under proper storage and handling conditions. Avoid repeated freeze-thaw cycles.
Storage	Store at -80 centigrade.
Concentration	>50 ug/mL as determined by microplate BCA method.
Preparation	Recombinant protein was captured through anti-DDK affinity column followed by

Tel: 1-631-559-9269 1-516-512-3133

Email: info@creative-biomart.com Fax: 1-631-938-8127

45-1 Ramsey Road, Shirley, NY 11967, USA

conventional chromatography steps.

Full Length Full L.

GENE INFORMATION

Gene Name SEC31A SEC31 homolog A, COPII coat complex component [Homo sapiens (human)]

Official Symbol SEC31A

Synonyms HPBKS; ABP125; ABP130; HSPC275; HSPC334; NEDSOSB; SEC31L1

Gene ID 22872

mRNA Refseq NM_001077208.4

Protein Refseq NP_001070676.1

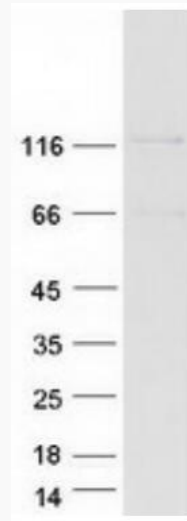
MIM 610257

UniProt ID O94979

 Tel: 1-631-559-9269 1-516-512-3133

 Email: info@creative-biomart.com  Fax: 1-631-938-8127

 45-1 Ramsey Road, Shirley, NY 11967, USA



Coomassie blue staining of purified SEC31A protein.

 Tel: 1-631-559-9269 1-516-512-3133

 Email: info@creative-biomart.com  Fax: 1-631-938-8127

 45-1 Ramsey Road, Shirley, NY 11967, USA