

Recombinant Human SEC31B Protein, Myc/DDK-tagged, C13 and N15-labeled

Cat. No. SEC31B-1373H Lot. No. (See product label)

SPECIFICATION

Product Overview

SEC31B MS Standard C13 and N15-labeled recombinant protein (NP_056305) with a C-terminal MYC/DDK tag, was expressed in HEK293 cells.

Species

Human

Source

HEK293

Description

This gene encodes a protein of unknown function. The protein has moderate similarity to rat VAP1 protein which is an endosomal membrane-associated protein, containing a putative Ca²⁺/calmodulin-dependent kinase II phosphorylation site.

Molecular Mass

129.1 kDa

AA Sequence

MKLKELERPAVQAWSPASQYPLYLATGTSAQQLDSSFSTNGTLEIFEVDFRDPSLDL
 KHRGVLSALSRFHKLWGSFGSGLLESSGVIVGGDNGMLILYNVTHILSSGKEPVI
 AQKQKHTGAVRALDLNPFQGNLLASGASDSEIFIWDLNNLNVPMTLGSKSQPPEDI
 KALSWNRQAQHILSSAHPSGKAVVWDLRKNEPIIKVSDHSNRMHCSEGLAWHPDIAT
 QLVLCSEDDRLPVIQLWDLRFASSPLKVLESHSRGILSVSWSQADAELLTSAKDSQI
 LCRNLGSSEVVYKLPTQSSWCFDVQWCPRDPSVFSAAFNGWISLYSVMGRSWEV
 QHMRQADKISSFSKQPLPPLQVPEQVAQAPLIPPLKPPKWIRPTGVSFAFGGK
 LVTFGLPSTPAHLVPQPCPRLVFISQVTTESEFLMRSaelQEALGSGNLLNYCQNKS
 QQALLQSEKMLWQFLKVTLEQDSRMKFLKLLGYSKDELQKKVATWLKSDVGLGESP
 QPKGNDLNSDRQQAFCSQASKHTTKEASASSAFFDELVPQNMTPWEIPITKDIDGLL

Tel: 1-631-559-9269 1-516-512-3133

Email: info@creative-biomart.com Fax: 1-631-938-8127

45-1 Ramsey Road, Shirley, NY 11967, USA

SQALLLGELGPAVELCLKEERFADAIILAQAGGTDLLKQTQERYLAKKKT KISSLLACV
 VQKNWKDVVCTCSLKNWREALALLLTYSGTEKFPPELDCMLGTRMEQEGSRALTSE
 ARLCYVCSGSVERLVECWAKCHQALSPMALQDLMEKVMVLNRSLEQLRGPBGVSP
 GPATTYRVVTQYANLLAAQGLATAMSFLPRDCAQPPVQQLRDLRFLHAQGS AVLGG
 QSPFFFPRIVVGATLHSKETSSYRLGSQPSHQVPTSPRPRVFTQSSPAMPLAP
 SHPSYQGPRTQNISDYRAPGPQAIQPLPLSPGVRPASSQPQLLGGQRVQVNPV
 GFPGTWPLPGSPLPMACPGIMRPGSTSLPETPRLFPLLPLRPLGPRMVSHTPAPP
 ASFPVPYLPGDGAPCSSLPTTGILTPHPGPQDSWKEAPAPRGNLQRNKLPETFM
 PPAPITAPVMSLTPELQGILPSQPPVSSVSHAPPGVPGELSLQLQHLPPEKMERKEL
 PPEHQLSKSSFALLQRCSLSATDLKTKRKL EEAQRLEYLYEKLCEGTLSPHVVAG
 LHEVARCVDAGSFEQGLAVHAQVAGCSSFSEVSSFMPILKAVLIIAHKLLVTRTRPLE
 QKLISEEDLAANDILDYKDDDDKV

Purity > 80% as determined by SDS-PAGE and Coomassie blue staining

Stability Stable for 3 months from receipt of products under proper storage and handling conditions.

Storage Store at -80 centigrade. Avoid repeated freeze-thaw cycles.

Concentration 50 µg/mL as determined by BCA

Storage Buffer 100 mM glycine, 25 mM Tris-HCl, pH 7.3.

GENE INFORMATION

Gene Name SEC31B SEC31 homolog B, COPII coat complex component [Homo sapiens (human)]

Official Symbol SEC31B

 Tel: 1-631-559-9269 1-516-512-3133

 Email: info@creative-biomart.com  Fax: 1-631-938-8127

 45-1 Ramsey Road, Shirley, NY 11967, USA

Synonyms SEC31B; SEC31 homolog B (*S. cerevisiae*); SEC31 like 2 (*S. cerevisiae*), SEC31L2; protein transport protein Sec31B; DKFZP434M183; SEC31B 1; SEC31-like 2; SEC31-like protein 2; SEC31-related protein B; secretory pathway component Sec31B-1; SEC31L2; SEC31B-1; DKFZp434M183;

Gene ID [25956](#)

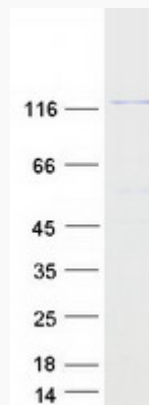
mRNA Refseq [NM_015490](#)

Protein Refseq [NP_056305](#)

MIM [610258](#)

UniProt ID [Q9NQW1](#)

SDS-PAGE



 Tel: 1-631-559-9269 1-516-512-3133

 Email: info@creative-biomart.com  Fax: 1-631-938-8127

 45-1 Ramsey Road, Shirley, NY 11967, USA