

## Recombinant Human SEC62 Protein, Myc/DDK-tagged, C13 and N15-labeled

**Cat. No.** SEC62-997H    **Lot. No.** (See product label)

### SPECIFICATION

<b>Product Overview</b>	SEC62 MS Standard C13 and N15-labeled recombinant protein (NP_003253) with a C-terminal MYC/DDK tag, was expressed in HEK293 cells.
<b>Species</b>	Human
<b>Source</b>	HEK293
<b>Description</b>	The Sec61 complex is the central component of the protein translocation apparatus of the endoplasmic reticulum (ER) membrane. The protein encoded by this gene and SEC63 protein are found to be associated with ribosome-free SEC61 complex. It is speculated that Sec61-Sec62-Sec63 may perform post-translational protein translocation into the ER. The Sec61-Sec62-Sec63 complex might also perform the backward transport of ER proteins that are subject to the ubiquitin-proteasome-dependent degradation pathway. The encoded protein is an integral membrane protein located in the rough ER.
<b>Molecular Mass</b>	45.7 kDa
<b>AA Sequence</b>	MAERRRHKKRIQEVGEPSKEEKAVAKYLRFCPTKSTNMMGHRVDYFIASKAVDCL LDSKWAKAKKGEEALFTTRESVVDYCNRLKKQFFHRALKVMKMKYDKDIKKEKDK GKAESGKEEDKKS KKENIKDEKTKKEKEKKKDGEKEESKKEETPGTPKKKTKKKFK LEPHDDQVFLDGNEVYVWIYDPVHFKTFVMGLILVIAVIAATLFPPLWPAEMRVGVYYL SVGAGCFVASILLAVARCILFLIWLITGGRHHFWFLPNLTADVGFIDFRPLYTHEYK

 Tel: 1-631-559-9269    1-516-512-3133

 Email: [info@creative-biomart.com](mailto:info@creative-biomart.com)     Fax: 1-631-938-8127

 45-1 Ramsey Road, Shirley, NY 11967, USA

GPKADLKKDEKSETKKQKSDSEEKSDSEKKEDEEGKVGPGNHGTEGSGGERHS  
 DTDSDRREDDRSQHSSGNGNDFEMITKEELEQQTDGDCEEDEEEENDGETPKSSH  
 EKSTRTRPLEQKLISEEDLAANDILDYKDDDDKV

**Purity** > 80% as determined by SDS-PAGE and Coomassie blue staining

**Stability** Stable for 3 months from receipt of products under proper storage and handling conditions.

**Storage** Store at -80 centigrade. Avoid repeated freeze-thaw cycles.

**Concentration** 50 µg/mL as determined by BCA

**Storage Buffer** 100 mM glycine, 25 mM Tris-HCl, pH 7.3.

## GENE INFORMATION

**Gene Name** SEC62 SEC62 homolog, preprotein translocation factor [ Homo sapiens (human) ]

**Official Symbol** SEC62

**Synonyms** SEC62; SEC62 homolog, preprotein translocation factor; HTP1; TP-1; Dtrp1; TLOC1; translocation protein SEC62; SEC62 preprotein translocation factor; hTP-1; membrane protein SEC62, S.cerevisiae, homolog of; translocation protein 1

**Gene ID** 7095

**mRNA Refseq** NM\_003262

**Protein Refseq** NP\_003253

 Tel: 1-631-559-9269 1-516-512-3133

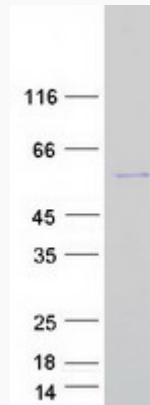
 Email: [info@creative-biomart.com](mailto:info@creative-biomart.com)  Fax: 1-631-938-8127

 45-1 Ramsey Road, Shirley, NY 11967, USA

**MIM** 602173

**UniProt ID** Q99442

**SDS-PAGE**



 Tel: 1-631-559-9269 1-516-512-3133

 Email: [info@creative-biomart.com](mailto:info@creative-biomart.com)  Fax: 1-631-938-8127

 45-1 Ramsey Road, Shirley, NY 11967, USA