

# Recombinant Human SEC63 Protein, Myc/DDK-tagged, C13 and N15-labeled

Cat. No. SEC63-3941H Lot. No. (See product label)

## SPECIFICATION

<b>Product Overview</b>	SEC63 MS Standard C13 and N15-labeled recombinant protein (NP_009145) with a C-terminal MYC/DDK tag, was expressed in HEK293 cells.
<b>Species</b>	Human
<b>Source</b>	HEK293
<b>Description</b>	The Sec61 complex is the central component of the protein translocation apparatus of the endoplasmic reticulum (ER) membrane. The protein encoded by this gene and SEC62 protein are found to be associated with ribosome-free SEC61 complex. It is speculated that Sec61-Sec62-Sec63 may perform post-translational protein translocation into the ER. The Sec61-Sec62-Sec63 complex might also perform the backward transport of ER proteins that are subject to the ubiquitin-proteasome-dependent degradation pathway. The encoded protein is an integral membrane protein located in the rough ER.
<b>Molecular Mass</b>	88 kDa
<b>AA Sequence</b>	MAGQQFQYDDSGNTFFYFLTSFVGLIVIPATYYLWPRDQNAEQIRLKNIRKVVYGRGM WYRLRLLKPQPNIPTVKKIVLLAGWALFLFLAYKVSKTREYQEYNPYEVLNLDPGA TVAEIKKQYRLLSLKYHPDKGGDEVFMFRIAKAYAALTDEESRKNWEEFGNPDGPQ ATSFGIALPAWIVDQKNSILVLLVYGLAFMVILPVVVGSWWYRSIRYSGDQILIRTTQIY TYFVYKTRNMDMKRLIMVLAGASEFDPQYNKDATS RPTDNILIPQLIREIGSINLKKNE

 Tel: 1-631-559-9269 1-516-512-3133

 Email: [info@creative-biomart.com](mailto:info@creative-biomart.com)  Fax: 1-631-938-8127

 45-1 Ramsey Road, Shirley, NY 11967, USA

PPLTCPYSLKARVLLLSHLARMKIPETLEEDQQFMLKKCPALLQEMVNVICQLIVMAR  
 NREEREFRAPTLASLENCMKLSQMAVQGLQQFKSPLLQLPHIEEDNLRRVSNHKKY  
 KIKTIQDLVSLKESDRHTLLHFLEDEKYEEVMAVLGSPYVTMDIKSQVLDDSDSNNIT  
 VGSLVTVLVKLTRQTMAEVFEKEQSICAAEEQPAEDGQGETNKNRTKGGWQQKSK  
 GPKKTAKSKKKKPLKKKPTVLLPQSKQQKQKQANGVVGNEAAVKEDEEEVSDKG  
 SDSEEEETNRDSQSEKDDGSDRDSREQDEKQNKDDEAEWQELQQSIQRKERALL  
 ETKSKITHPVYSLYFPEEKQEWLWLYIADRKEQTLISMPYHVCTLDTEEVELKFPA  
 PGKPGNYQYTVFLRSDSYMGLDQIKPLKLEVHEAKVPENHPQWDTAIEGDEDQED  
 SEGFEDSFEEEEEEEEEDDTRTRPLEQKLISEEDLAANDILDYKDDDDKV

**Purity** > 80% as determined by SDS-PAGE and Coomassie blue staining

**Stability** Stable for 3 months from receipt of products under proper storage and handling conditions.

**Storage** Store at -80 centigrade. Avoid repeated freeze-thaw cycles.

**Concentration** 50 µg/mL as determined by BCA

**Storage Buffer** 100 mM glycine, 25 mM Tris-HCl, pH 7.3.

## GENE INFORMATION

**Gene Name** SEC63 SEC63 homolog, protein translocation regulator [ Homo sapiens (human) ]

**Official Symbol** SEC63

**Synonyms** SEC63; SEC63 homolog (S. cerevisiae); SEC63 like (S. cerevisiae); translocation protein SEC63 homolog; DNAJC23; ERdj2; PRO2507; SEC63L;

**Gene ID** 11231

 Tel: 1-631-559-9269 1-516-512-3133

 Email: [info@creative-biomart.com](mailto:info@creative-biomart.com)  Fax: 1-631-938-8127

 45-1 Ramsey Road, Shirley, NY 11967, USA

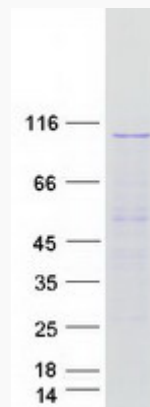
mRNA Refseq [NM\\_007214](#)

Protein Refseq [NP\\_009145](#)

MIM [608648](#)

UniProt ID [Q9UGP8](#)

SDS-PAGE



 Tel: 1-631-559-9269 1-516-512-3133

 Email: [info@creative-biomart.com](mailto:info@creative-biomart.com)  Fax: 1-631-938-8127

 45-1 Ramsey Road, Shirley, NY 11967, USA