

Recombinant Human SEH1L Protein, Myc/DDK-tagged, C13 and N15-labeled

Cat. No. SEH1L-6684H Lot. No. (See product label)

SPECIFICATION

Product Overview	SEH1L MS Standard C13 and N15-labeled recombinant protein (NP_112493) with a C-terminal MYC/DDK tag, was expressed in HEK293 cells.
Species	Human
Source	HEK293
Description	The protein encoded by this gene is part of a nuclear pore complex, Nup107-160. This protein contains WD repeats and shares 34% amino acid identity with yeast Seh1 and 30% identity with yeast Sec13. All constituents of the Nup107-160 complex, including this protein, specifically localize to kinetochores in mitosis. Two alternatively spliced transcript variants encoding distinct isoforms have been found for this gene.
Molecular Mass	39.6 kDa
AA Sequence	MFVARSAADHKDLIHDFVDFHGRMATCSSDQSVKVVWDKSESGDWHCTASWKT HSGSVWRVTWAHPEFGQVLASCSFDRTAAVWEEIVGESNDKLRGQSHWVKRTTLV DSRTSVTDVKFAPKHMGLMLATCSADGIVRIYEAPDVMNLSQWLSLQHEISCKLSCSC ISWNPSSSRAHSPMIAVGSDDSSPNAMAKVQIFEYNENTRKYAKAETLMTVTDPVH DIAFAPNLGRSFHILAIATKDVRIFTLKPVRKELTSSGGPTKFEIHIVAQFDNHNSQVW RVSWNITGTVLASSGDDGCVRLWKANYMDNWKCTGILKGNNGSPVNGSSQQGTSN PSLGSTIPSLQNSLNGSSAGRKHSTRTRPLEQKLISEEDLAANDILDYKDDDDKV
Purity	> 80% as determined by SDS-PAGE and Coomassie blue staining

 Tel: 1-631-559-9269 1-516-512-3133

 Email: info@creative-biomart.com  Fax: 1-631-938-8127

 45-1 Ramsey Road, Shirley, NY 11967, USA

Stability	Stable for 3 months from receipt of products under proper storage and handling conditions.
Storage	Store at -80 centigrade. Avoid repeated freeze-thaw cycles.
Concentration	50 µg/mL as determined by BCA
Storage Buffer	100 mM glycine, 25 mM Tris-HCl, pH 7.3.

GENE INFORMATION

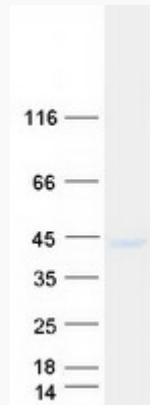
Gene Name	SEH1L SEH1 like nucleoporin [Homo sapiens (human)]
Official Symbol	SEH1L
Synonyms	SEH1L; SEH1 like nucleoporin; Seh1; SEH1A; SEH1B; SEC13L; nucleoporin SEH1; GATOR complex protein SEH1; SEC13-like protein; nup107-160 subcomplex subunit SEH1; sec13 like protein
Gene ID	81929
mRNA Refseq	NM_031216
Protein Refseq	NP_112493
MIM	609263
UniProt ID	Q96EE3

 Tel: 1-631-559-9269 1-516-512-3133

 Email: info@creative-biomart.com  Fax: 1-631-938-8127

 45-1 Ramsey Road, Shirley, NY 11967, USA

SDS-PAGE



 Tel: 1-631-559-9269 1-516-512-3133

 Email: info@creative-biomart.com  Fax: 1-631-938-8127

 45-1 Ramsey Road, Shirley, NY 11967, USA