

Active Recombinant Human SELE Protein, His-tagged

Cat. No. SELE-05H Lot. No. (See product label)

SPECIFICATION

Product Overview	Recombinant human E selectin (22-556aa), fused to His-tag at C-terminus, was expressed in insect cell and purified by using conventional chromatography techniques.
Species	Human
Source	Insect Cells
ProteinLength	22-556 a.a.
Description	<p>The protein encoded by this gene is found in cytokine-stimulated endothelial cells and is thought to be responsible for the accumulation of blood leukocytes at sites of inflammation by mediating the adhesion of cells to the vascular lining. It exhibits structural features such as the presence of lectin- and EGF-like domains followed by short consensus repeat (SCR) domains that contain 6 conserved cysteine residues. These proteins are part of the selectin family of cell adhesion molecules. Adhesion molecules participate in the interaction between leukocytes and the endothelium and appear to be involved in the pathogenesis of atherosclerosis.</p>
Form	Liquid
Bio-activity	Measured by the ability of the immobilized protein to support the adhesion of U937 human histiocytic lymphoma cells. When cells are added to human E-Seleitin/CD62E coated plates 2 µg/mL. This effect is more to 40%.

 Tel: 1-631-559-9269 1-516-512-3133

 Email: info@creative-biomart.com  Fax: 1-631-938-8127

 45-1 Ramsey Road, Shirley, NY 11967, USA

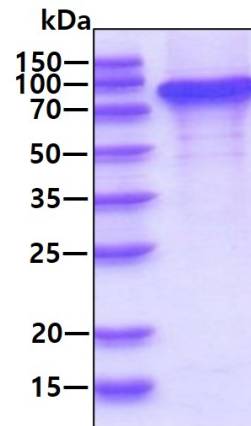
Molecular Mass	59.4kDa(541aa)
AA Sequence	<p>WSYNTSTEAMTYDEASAYCQQRYPYTHLVAIQNKKEEIEYLNSILSYSPSYWIGIRKVNN VWVWVGTQKPLTEEAKNWAPGEPNNRQKDEDCVEIYIKREKDVGMWNDERCSKK KLALCYTAACTNTSCSGHGECVETINNYTCKCDPGFSGLKCEQIVNCTALESPEHGS LVCSHPLGNFSYNSSCSISCDRGLPSSMETMQCMSSGEWSAPIACNVVECDAVT NPANGFVECFQNPGSFPWNTTCTFDCEEGFELMGAQSLQCTSSGNWDNEKPTCK AVTCRAVRQPQNGSVRCSHSPAGEFTFKSSCNFTCEEGLMLQGPAQVECTTQGG WTQQIPVCEAFQCTALSNPERGYMNCLPSASGSFRYGSSECFSCQGFVLKGSKR LQCGPTGEWDNEKPTCEAVRCDAVHQPPKGLVRCASPIGFTYKSSCAFSCEEG FELHGSTQLECTSQGQWTEEVPSQVVKCSSLAVPGKINMSCSGEPVFGTVCKFA CPEGWTLNGSAARTCGATGHWSGLLPTCEAPTESNIP</p>
Endotoxin	< 1 EU/μg of protein (determined by LAL method)
Purity	> 95% by SDS-PAGE
Applications	SDS-PAGE, Bioactivity
Storage	Can be stored at +2 to +8 centigrade for 1 week. For long term storage, aliquot and store at -20 to -80 centigrade. Avoid repeated freezing and thawing cycles.
Concentration	0.5 mg/mL (determined by Absorbance at 280nm)
Storage Buffer	In Phosphate-Buffered Saline (pH 7.4) containing 10% glycerol
GENE INFORMATION	
Gene Name	SELE selectin E [Homo sapiens (human)]
Official Symbol	SELE

 Tel: 1-631-559-9269 1-516-512-3133


 Email: info@creative-biomart.com  Fax: 1-631-938-8127

 45-1 Ramsey Road, Shirley, NY 11967, USA

Synonyms	SELE; selectin E; ELAM; ESEL; CD62E; ELAM1; LECAM2; E-selectin; CD62 antigen-like family member E; ELAM-1; endothelial adhesion molecule 1; endothelial leukocyte adhesion molecule 1; leukocyte endothelial cell adhesion molecule 2
Gene ID	6401
mRNA Refseq	NM_000450
Protein Refseq	NP_000441
MIM	131210
UniProt ID	P16581

SDS-PAGE

3 µg by SDS-PAGE under reducing condition and visualized by coomassie blue stain.

 Tel: 1-631-559-9269 1-516-512-3133

 Email: info@creative-biomart.com  Fax: 1-631-938-8127

 45-1 Ramsey Road, Shirley, NY 11967, USA