

Recombinant Human SELE Protein (Trp22-Ser371), N-His tagged

Cat. No. SELE-1106H **Lot. No.** (See product label)

SPECIFICATION

Product Overview	Recombinant Human CD62E/SELE (Trp22-Ser371) fused with the N-His tag was expressed in E. coli.
Species	Human
Source	E.coli
ProteinLength	Trp22-Ser371
Form	Lyophilized powder/frozen liquid
Molecular Mass	41.22 kDa
Purity	>90% as determined by SDS-PAGE.
Notes	For research use only.
Storage	Use a manual defrost freezer and avoid repeated freeze thaw cycles. Store at 2 to 8 centigrade for one week. Store at -20 to -80 centigrade for twelve months from the date of receipt.
Storage Buffer	0.01M PBS, pH 7.4, 0.02% NLS
Reconstitution	Reconstitute in sterile water for a stock solution.

 Tel: 1-631-559-9269 1-516-512-3133

 Email: info@creative-biomart.com  Fax: 1-631-938-8127

 45-1 Ramsey Road, Shirley, NY 11967, USA

Shipping They are shipped out with dry ice/blue ice unless customers require otherwise.

GENE INFORMATION

Gene Name SELE selectin E [Homo sapiens (human)]

Official Symbol SELE

Synonyms SELE; selectin E; ELAM, ELAM1, endothelial adhesion molecule 1; E-selectin; CD62E; ESEL; ELAM-1; endothelial adhesion molecule 1; CD62 antigen-like family member E; endothelial leukocyte adhesion molecule 1; leukocyte endothelial cell adhesion molecule 2; leukocyte-endothelial cell adhesion molecule 2; ELAM; ELAM1; LECAM2;

Gene ID 6401

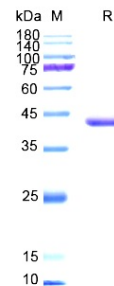
mRNA Refseq NM_000450

Protein Refseq NP_000441

MIM 131210

UniProt ID P16581

SDS-PAGE



 Tel: 1-631-559-9269 1-516-512-3133

 Email: info@creative-biomart.com  Fax: 1-631-938-8127

 45-1 Ramsey Road, Shirley, NY 11967, USA