

## Recombinant Human Selectin E

Cat. No. SELE-117H Lot. No. (See product label)

### SPECIFICATION

<b>Product Overview</b>	Recombinant Human E-Selectin expressed in <i>E. Coli</i> contains 179-557 amino acids and has a has a molecular mass of 54 kDa.
<b>Species</b>	Human
<b>Source</b>	E.coli
<b>ProteinLength</b>	179-557 a.a.
<b>Description</b>	E-selectin which is also called Endothelial leukocyte adhesion molecule 1, ELAM1, ELAM belongs to a family of divalent cation-dependent carbohydrate-binding glycoproteins or adhesion molecules. Eselectin is expressed on the surface of endothelial cells and mediates the interaction of leukocytes and platelets with endothelial cells during an inflammatory response.
<b>Formulation</b>	Recombinant Human E-Selectin is supplied in 50% Glycerol.
<b>Application</b>	The rhE-Selectin can be used directly as a positive control in Western blotting, ELISA, immunoprecipitation and other immunological experiments. The biological activity of this product has not yet been tested.
<b>Purity</b>	Greater than 95% (SDS-PAGE). Single band on Western Blot.
<b>Storage Conditions</b>	Store at 4°C if entire vial will be used within 1-2 weeks. Store, frozen at -20°C for longer periods of time. Avoid multiple freeze-thaw cycles.

 Tel: 1-631-559-9269 1-516-512-3133

 Email: [info@creative-biomart.com](mailto:info@creative-biomart.com)  Fax: 1-631-938-8127

 45-1 Ramsey Road, Shirley, NY 11967, USA

## GENE INFORMATION

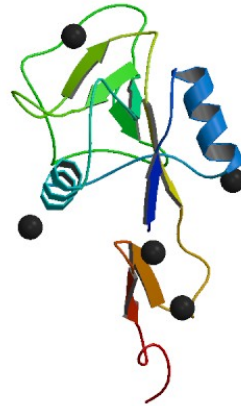
<b>Gene Name</b>	SELE selectin E [ Homo sapiens ]
<b>Synonyms</b>	SELE; selectin E; ELAM; ESEL; CD62E; ELAM1; LECAM2; ELAM-1; OTTHUMP00000032745; CD62 antigen-like family member E; CD62E antigen; Endothelial leukocyte adhesion molecule 1; Leukocyte-endothelial cell adhesion molecule 2; endothelial adhesion molecule 1; leukocyte endothelial cell adhesion molecule 2
<b>Gene ID</b>	6401
<b>mRNA Refseq</b>	NM_000450
<b>Protein Refseq</b>	NP_000441
<b>UniProt ID</b>	P16581
<b>Chromosome Location</b>	1q22-q25
<b>MIM</b>	131210
<b>Pathway</b>	Cell adhesion molecules (CAMs)
<b>Function</b>	oligosaccharide binding; phospholipase binding; protein binding; protein binding; sialic acid binding; sugar binding; transmembrane receptor activity

 Tel: 1-631-559-9269 1-516-512-3133

 Email: [info@creative-biomart.com](mailto:info@creative-biomart.com)  Fax: 1-631-938-8127

 45-1 Ramsey Road, Shirley, NY 11967, USA

PDB rendering based  
on 1esl.



 Tel: 1-631-559-9269 1-516-512-3133

 Email: [info@creative-biomart.com](mailto:info@creative-biomart.com)  Fax: 1-631-938-8127

 45-1 Ramsey Road, Shirley, NY 11967, USA