

Active Recombinant Human SELE protein, His-tagged

Cat. No. SELE-1282H Lot. No. (See product label)

SPECIFICATION

Product Overview	Active Recombinant Human SELE/E-selectin/CD62E Protein is produced by HEK293 expression system. The target protein is expressed with sequence (Trp22-Pro556) of human E-Selectin/CD62E (Accession #NP_000441.2) fused with a 6xHis tag at the C-terminus.
Species	Human
Source	HEK293
ProteinLength	Trp22-Pro556
Form	Lyophilized from a 0.22 µm filtered solution of PBS, pH 7.4.
Bio-activity	Measured by the ability of the immobilized protein to support the adhesion of U937 human histiocytic lymphoma cells. When 5 x 10 ⁴ cells/well are added to human E-Selectin/Fc Chimera coated plates (2 µg/mL with 100 µL/well), approximately 40-50% will adhere after 1 hour incubation at 37°C.
Molecular Mass	110-120 kDa
Purity	> 97% by SDS-PAGE.
Storage	Store the lyophilized protein at -20°C to -80 °C for long term. After reconstitution, the protein solution is stable at -20 °C for 3 months, at 2-8 °C for up to 1 week.

 Tel: 1-631-559-9269 1-516-512-3133

 Email: info@creative-biomart.com  Fax: 1-631-938-8127

 45-1 Ramsey Road, Shirley, NY 11967, USA



Reconstitution Reconstitute to a concentration of 0.1-0.5 mg/mL in sterile distilled water.

GENE INFORMATION

Gene Name SELE selectin E [Homo sapiens]

Official Symbol SELE

Synonyms SELE; selectin E; ELAM, ELAM1, endothelial adhesion molecule 1; E-selectin; CD62E; ESEL; ELAM-1; endothelial adhesion molecule 1; CD62 antigen-like family member E; endothelial leukocyte adhesion molecule 1; leukocyte endothelial cell adhesion molecule 2; leukocyte-endothelial cell adhesion molecule 2; ELAM; ELAM1; LECAM2;

Gene ID 6401

mRNA Refseq NM_000450

Protein Refseq NP_000441

MIM 131210

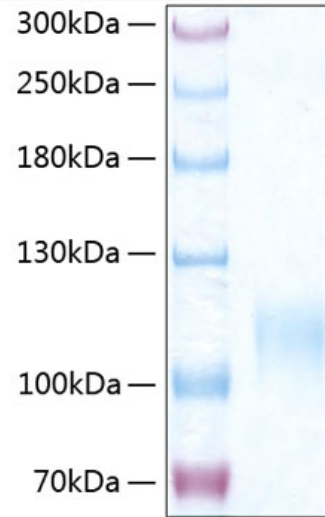
UniProt ID P16581

 Tel: 1-631-559-9269 1-516-512-3133

 Email: info@creative-biomart.com  Fax: 1-631-938-8127

 45-1 Ramsey Road, Shirley, NY 11967, USA

SDS-PAGE



 Tel: 1-631-559-9269 1-516-512-3133

 Email: info@creative-biomart.com  Fax: 1-631-938-8127

 45-1 Ramsey Road, Shirley, NY 11967, USA