

Recombinant Human SELE Protein, Myc/DDK-tagged, C13 and N15-labeled

Cat. No. SELE-1819H **Lot. No.** (See product label)

SPECIFICATION

Product Overview

SELE MS Standard C13 and N15-labeled recombinant protein (NP_000441) with a C-terminal MYC/DDK tag, was expressed in HEK293 cells.

Species

Human

Source

HEK293

Description

The protein encoded by this gene is found in cytokine-stimulated endothelial cells and is thought to be responsible for the accumulation of blood leukocytes at sites of inflammation by mediating the adhesion of cells to the vascular lining. It exhibits structural features such as the presence of lectin- and EGF-like domains followed by short consensus repeat (SCR) domains that contain 6 conserved cysteine residues. These proteins are part of the selectin family of cell adhesion molecules. Adhesion molecules participate in the interaction between leukocytes and the endothelium and appear to be involved in the pathogenesis of atherosclerosis.

Molecular Mass

66.66 kDa

AA Sequence

MIASQFLSALTLVLLIKESGAWSYNTSTEAMTYDEASAYCQQRVYTHLVAIQNKKEIEY
LNSILSYSPSYWIGIRKVNNVVWVVGVTQKPLTEEAKNWAPGEPNNRQKDEDCVEI
YIKREKDVGMWNDERCSKKKLALCYTA ACTNTSCSGHGECVETINNYTCKCDPGFS
GLKCEQIVNCTALESPEHGSLVCSHPLGNFSYNSSCSISCDRGYLPSSMETMQCMS
SGEWSAPIPACNVVECDAVTNPANGFVECFQNP GSF PWNTTCTFDCEE GFELMGA

 Tel: 1-631-559-9269 1-516-512-3133

 Email: info@creative-biomart.com  Fax: 1-631-938-8127

 45-1 Ramsey Road, Shirley, NY 11967, USA

QSLQCTSSGNWDNEKPTCKAVTCRAVRQPQNGSVRCSHSPAGEFTFKSSCNFTCE
 EGFMLQGPAQVECTTQGQWTQQIPVCEAFQCTALSNPERGYMNCPLPSASGSFRY
 GSSCEFSCEQGFVLKGSKRLLQCGPTGEWDNEKPTCEAVRCDAVHQPPKGLVRCA
 HSPIGEFTYKSSCAFSCEEGFELHGSTQLECTSQGQWTEEVPSQCQVVKCSSLAVPG
 KINMSCSGEPVFGTVCKFACPEGWTLNGSAARTCGATGHWSGLLPTCEAPTESNIP
 LVAGLSAAGLSLLTLAPFLLWLRKCLRKAKKFVPASSCQSLESDGSYQKPSYILTRTR
 PLEQKLISEEDLAANDILDYKDDDDKV

Purity > 80% as determined by SDS-PAGE and Coomassie blue staining

Stability Stable for 3 months from receipt of products under proper storage and handling conditions.

Storage Store at -80 centigrade. Avoid repeated freeze-thaw cycles.

Concentration 50 µg/mL as determined by BCA

Storage Buffer 100 mM glycine, 25 mM Tris-HCl, pH 7.3.

GENE INFORMATION

Gene Name [SELE selectin E \[Homo sapiens \(human\) \]](#)

Official Symbol [SELE](#)

Synonyms SELE; selectin E; ELAM, ELAM1, endothelial adhesion molecule 1; E-selectin; CD62E; ESEL; ELAM-1; endothelial adhesion molecule 1; CD62 antigen-like family member E; endothelial leukocyte adhesion molecule 1; leukocyte endothelial cell adhesion molecule 2; leukocyte-endothelial cell adhesion molecule 2; ELAM; ELAM1; LECAM2;

 Tel: 1-631-559-9269 1-516-512-3133

 Email: info@creative-biomart.com  Fax: 1-631-938-8127

 45-1 Ramsey Road, Shirley, NY 11967, USA

Gene ID 6401

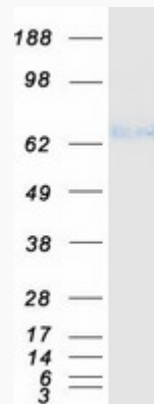
mRNA Refseq NM_000450

Protein Refseq NP_000441

MIM 131210

UniProt ID P16581

SDS-PAGE



 Tel: 1-631-559-9269 1-516-512-3133

 Email: info@creative-biomart.com  Fax: 1-631-938-8127

 45-1 Ramsey Road, Shirley, NY 11967, USA