

## Recombinant Human SELE protein, hFc-tagged

Cat. No. SELE-4633H Lot. No. (See product label)

### SPECIFICATION

<b>Product Overview</b>	Recombinant Human SELE protein(P16581)(Trp22-Pro556), fused with C-terminal hFc tag, was expressed in HEK293.
<b>Species</b>	Human
<b>Source</b>	HEK293
<b>ProteinLength</b>	Trp22-Pro556
<b>Tag</b>	C-hFc
<b>Form</b>	Supplied as 0.22µm filtered solution in PBS (pH 7.4).
<b>Bio-activity</b>	Immobilized Human E-Selectin, hFc Tag at 0.5ug/ml (100ul/Well) on the plate. Dose response curve for Biotinylated Anti-E-Selectin Antibody, hFc Tag with the EC50 20.5ng/ml determined by ELISA.
<b>Molecular Mass</b>	The protein has a predicted MW of 85.4 kDa. Due to glycosylation, the protein migrates to 90-130 kDa based on Tris-Bis PAGE result.
<b>Endotoxin</b>	Less than 1EU per µg by the LAL method.
<b>Purity</b>	> 95% as determined by Tris-Bis PAGE;> 95% as determined by HPLC
<b>Storage</b>	Valid for 12 months from date of receipt when stored at -80°C. Recommend to aliquot

 Tel: 1-631-559-9269 1-516-512-3133

 Email: [info@creative-biomart.com](mailto:info@creative-biomart.com)  Fax: 1-631-938-8127

 45-1 Ramsey Road, Shirley, NY 11967, USA

the protein into smaller quantities for optimal storage. Please do not repeated freeze-thaw cycles.

**Reconstitution**

It is recommended that sterile water be added to the vial to prepare a stock solution of 0.2 ug/ul. Centrifuge the vial at 4°C before opening to recover the entire contents.

## GENE INFORMATION

**Gene Name** [SELE selectin E \[ Homo sapiens \]](#)

**Official Symbol** [SELE](#)

**Synonyms**

SELE; selectin E; ELAM, ELAM1, endothelial adhesion molecule 1; E-selectin; CD62E; ESEL; ELAM-1; endothelial adhesion molecule 1; CD62 antigen-like family member E; endothelial leukocyte adhesion molecule 1; leukocyte endothelial cell adhesion molecule 2; leukocyte-endothelial cell adhesion molecule 2; ELAM; ELAM1; LECAM2;

**Gene ID** [6401](#)

**mRNA Refseq** [NM\\_000450](#)

**Protein Refseq** [NP\\_000441](#)

**MIM** [131210](#)

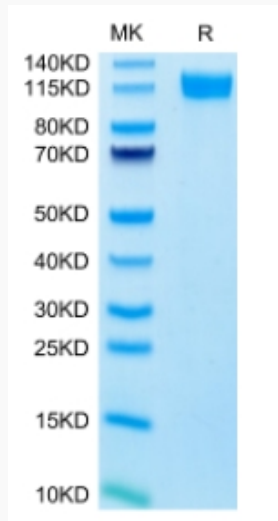
**UniProt ID** [P16581](#)

 Tel: 1-631-559-9269 1-516-512-3133

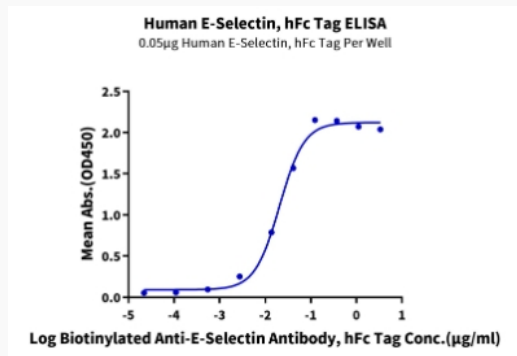
 Email: [info@creative-biomart.com](mailto:info@creative-biomart.com)  Fax: 1-631-938-8127

 45-1 Ramsey Road, Shirley, NY 11967, USA

**Tris-Bis PAGE**



**ELISA Data**



 Tel: 1-631-559-9269 1-516-512-3133

 Email: [info@creative-biomart.com](mailto:info@creative-biomart.com)  Fax: 1-631-938-8127

 45-1 Ramsey Road, Shirley, NY 11967, USA