

Recombinant Human SELE protein, His-Avi-tagged, Biotinylated

Cat. No. SELE-581HB **Lot. No.** (See product label)

SPECIFICATION

Product Overview	Biotinylated Recombinant Human SELE protein(P16581)(Trp22-Pro556), fused with C-terminal His and Avi tag, was expressed in HEK293.
Species	Human
Source	HEK293
ProteinLength	Trp22-Pro556
Tag	C-His-Avi
Conjugation/Label	Biotin
Form	Lyophilized from 0.22µm filtered solution in PBS (pH 7.4). Normally 5% trehalose is added as protectant before lyophilization.
Bio-activity	Immobilized Biotinylated Human E-selectin, His Tag at 1ug/ml (100ul/Well) on streptavidin (5ug/ml) precoated plate. Dose response curve for Anti-E-Selectin Antibody, hFc Tag with the EC50 of 3.2ng/ml determined by ELISA.
Molecular Mass	The protein has a predicted MW of 61.6 kDa. Due to glycosylation, the protein migrates to 80-100 kDa based on Tris-Bis PAGE result.
Endotoxin	Less than 1EU per µg by the LAL method.

 Tel: 1-631-559-9269 1-516-512-3133

 Email: info@creative-biomart.com  Fax: 1-631-938-8127

 45-1 Ramsey Road, Shirley, NY 11967, USA

Purity	> 95% as determined by Tris-Bis PAGE;> 95% as determined by HPLC
Storage	Reconstituted protein stable at -80°C for 12 months, 4°C for 1 week. Use a manual defrost freezer and avoid repeated freeze-thaw cycles.
Reconstitution	Centrifuge tubes before opening. Reconstituting to a concentration more than 100 µg/ml is recommended. Dissolve the lyophilized protein in distilled water.
Conjugation	Biotin

GENE INFORMATION

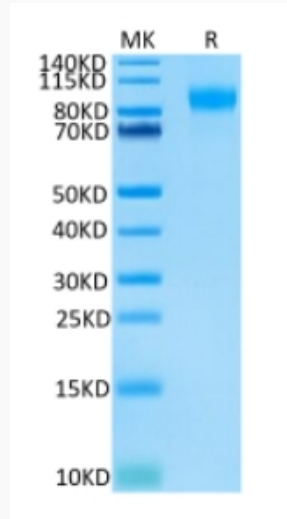
Gene Name	SELE selectin E [Homo sapiens]
Official Symbol	SELE
Synonyms	SELE; selectin E; ELAM, ELAM1, endothelial adhesion molecule 1; E-selectin; CD62E; ESEL; ELAM-1; endothelial adhesion molecule 1; CD62 antigen-like family member E; endothelial leukocyte adhesion molecule 1; leukocyte endothelial cell adhesion molecule 2; leukocyte-endothelial cell adhesion molecule 2; ELAM; ELAM1; LECAM2;
Gene ID	6401
mRNA Refseq	NM_000450
Protein Refseq	NP_000441
MIM	131210
UniProt ID	P16581

 Tel: 1-631-559-9269 1-516-512-3133

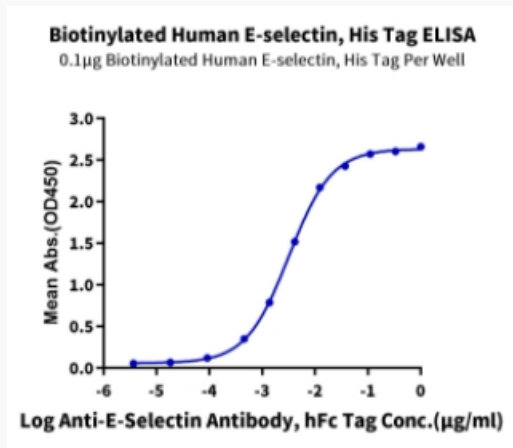
 Email: info@creative-biomart.com  Fax: 1-631-938-8127

 45-1 Ramsey Road, Shirley, NY 11967, USA

Tris-Bis PAGE



ELISA Data



 Tel: 1-631-559-9269 1-516-512-3133

 Email: info@creative-biomart.com  Fax: 1-631-938-8127

 45-1 Ramsey Road, Shirley, NY 11967, USA