

Recombinant Dog SELE protein, His & T7-tagged

Cat. No. SELE-607D Lot. No. (See product label)

SPECIFICATION

Product Overview	Recombinant Dog SELE aa. (Trp23~Val240) fused with N-terminal His & T7 tag was produced in E. coli cells.
Species	Dog
Source	E.coli
ProteinLength	Trp23~Val240
Form	Freeze-dried powder
Molecular Mass	Predicted Molecular Mass: 28.3kDa
Endotoxin	<1.0EU per 1g (determined by the LAL method)
Purity	> 95%
Characteristic	The isoelectric point is 5.8.
Applications	SDS-PAGE; WB; ELISA; IP.
Stability	The thermal stability is described by the loss rate. The loss rate was determined by accelerated thermal degradation test, that is, incubate the protein at 37°C for 48h, and no obvious degradation and precipitation were observed. The loss rate is less than 5% within the expiration date under appropriate storage condition.

 Tel: 1-631-559-9269 1-516-512-3133

 Email: info@creative-biomart.com  Fax: 1-631-938-8127

 45-1 Ramsey Road, Shirley, NY 11967, USA

Storage	Avoid repeated freeze/thaw cycles. Store at 2-8°C for one month. Aliquot and store at -80°C for 12 months.
Storage buffer	PBS, pH7.4, containing 5% sucrose, 0.01% sarcosyl.
Reconstitution	Reconstitute in sterile PBS, pH7.2-pH7.4

GENE INFORMATION

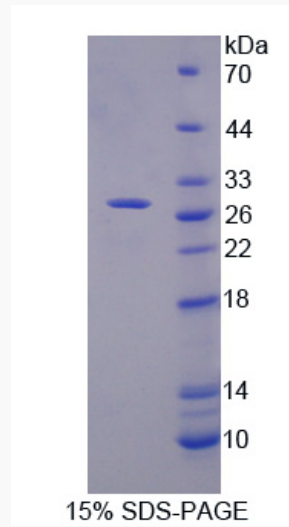
Gene Name	SELE selectin E [<i>Canis lupus familiaris</i> (dog)]
Official Symbol	SELE
Synonyms	SELE; selectin E; ELAM-1; LECAM2; E-selectin; CD62 antigen-like family member E; endothelial leukocyte adhesion molecule 1; leukocyte-endothelial cell adhesion molecule 2; selectin E (endothelial adhesion molecule 1)
Gene ID	403999
mRNA Refseq	NM_001003310.2
Protein Refseq	NP_001003310.2

 Tel: 1-631-559-9269 1-516-512-3133

 Email: info@creative-biomart.com  Fax: 1-631-938-8127

 45-1 Ramsey Road, Shirley, NY 11967, USA

SDS-PAGE



 Tel: 1-631-559-9269 1-516-512-3133

 Email: info@creative-biomart.com  Fax: 1-631-938-8127

 45-1 Ramsey Road, Shirley, NY 11967, USA