

Recombinant Pig SELE protein

Cat. No. SELE-6109P Lot. No. (See product label)

SPECIFICATION

Product Overview	Recombinant Pig SELE protein(P98110)(23-429aa) was expressed in E.coli.
Species	Pig
Source	E.coli
ProteinLength	23-429aa
Form	If the delivery form is liquid, the default storage buffer is Tris/PBS-based buffer, 5%-50% glycerol. If the delivery form is lyophilized powder, the buffer before lyophilization is Tris/PBS-based buffer, 6% Trehalose, pH 8.0.
Molecular Mass	44.4 kDa
Purity	Greater than 90% as determined by SDS-PAGE.
Storage	Store at -20°C/-80°C upon receipt, aliquoting is necessary for mutiple use. Avoid repeated freeze-thaw cycles.
Reconstitution	We recommend that this vial be briefly centrifuged prior to opening to bring the contents to the bottom. Please reconstitute protein in deionized sterile water to a concentration of 0.1-1.0 mg/mL. We recommend to add 5-50% of glycerol (final concentration) and aliquot for long-term storage at -20°C/-80°C.
AA Sequence	WSYSASTETMTFDDASAYCQQR YTHLVAIQNHAEIEYLNSTFNYSASYWIGIRKING

 Tel: 1-631-559-9269 1-516-512-3133

 Email: info@creative-biomart.com  Fax: 1-631-938-8127

 45-1 Ramsey Road, Shirley, NY 11967, USA



TWTWIGTKKALTPEATNWAPGEPNNKQSNEDCVEIYIKRDKDSGKWNDERCSKKKL
ALCYTAACTPTSCSGHGECIETINSSTCQCYPGFRGLQCEQVVECDALENPVNGVV
TCPQSLPWNTTCAFECKEGFELIGPEHLQCTSSGSWDGKKPTCKAVTCDTVGHPQ
NGDVSCNHSSIGEFAYKSTCHFTCAEGFGLQGPAQIECTAQQQWTQQAPVCKAVK
CPAVSQPKNGLVKFTHSPTGEFTYKSSCAFSCEEGFELRGSACLACTSQGQWTQE
VPSCQVVQCSSLEVPREINMSCSGEPVFGAVCTFACPEGWMLNGSVALTCGATGH
WSGMLPTCEAPAESKIP

GENE INFORMATION

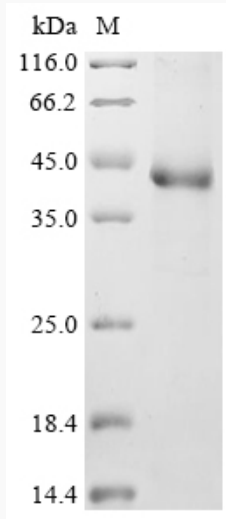
Gene Name	SELE selectin E [<i>Sus scrofa</i>]
Official Symbol	SELE
Synonyms	SELE; selectin E; E-selectin; ELAM-1; LECAM2; CD62 antigen-like family member E; endothelial leukocyte adhesion molecule 1; selectin E (endothelial adhesion molecule 1); leukocyte-endothelial cell adhesion molecule 2;
Gene ID	397508
mRNA Refseq	NM_214268
Protein Refseq	NP_999433

Tel: 1-631-559-9269 1-516-512-3133

Email: info@creative-biomart.com Fax: 1-631-938-8127

45-1 Ramsey Road, Shirley, NY 11967, USA

SDS-PAGE



 Tel: 1-631-559-9269 1-516-512-3133

 Email: info@creative-biomart.com  Fax: 1-631-938-8127

 45-1 Ramsey Road, Shirley, NY 11967, USA