

Recombinant Pig SELE protein, His & GST-tagged

Cat. No. SELE-610P Lot. No. (See product label)

SPECIFICATION

Product Overview	Recombinant Pig SELE aa. (Trp23~Tyr140) fused with N-terminal His & GST tag was produced in E. coli cells.
Species	Pig
Source	E.coli
ProteinLength	Trp23~Tyr140
Form	Freeze-dried powder
Molecular Mass	Predicted Molecular Mass: 45.7kDa
Endotoxin	<1.0EU per 1g (determined by the LAL method)
Purity	> 95%
Characteristic	The isoelectric point is 6.2.
Applications	SDS-PAGE; WB; ELISA; IP.
Stability	The thermal stability is described by the loss rate. The loss rate was determined by accelerated thermal degradation test, that is, incubate the protein at 37°C for 48h, and no obvious degradation and precipitation were observed. The loss rate is less than 5% within the expiration date under appropriate storage condition.

 Tel: 1-631-559-9269 1-516-512-3133

 Email: info@creative-biomart.com  Fax: 1-631-938-8127

 45-1 Ramsey Road, Shirley, NY 11967, USA

Storage	Avoid repeated freeze/thaw cycles. Store at 2-8°C for one month. Aliquot and store at -80°C for 12 months.
Storage buffer	PBS, pH7.4, containing 5% sucrose, 0.01% sarcosyl.
Reconstitution	Reconstitute in sterile PBS, pH7.2-pH7.4

GENE INFORMATION

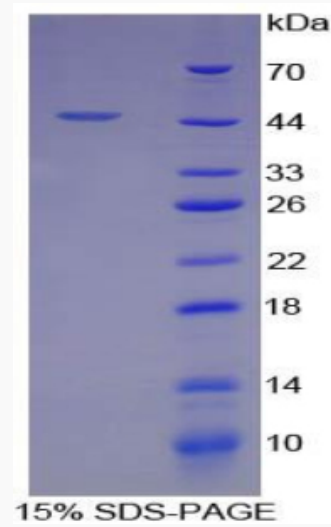
Gene Name	SELE selectin E [<i>Sus scrofa</i> (pig)]
Official Symbol	SELE
Synonyms	SELE; selectin E; CD62 antigen-like family member E; E-selectin; ELAM-1; LECAM2; endothelial leukocyte adhesion molecule 1; leukocyte-endothelial cell adhesion molecule 2; selectin E (endothelial adhesion molecule 1)
Gene ID	397508
mRNA Refseq	NM_214268.2
Protein Refseq	NP_999433.2

 Tel: 1-631-559-9269 1-516-512-3133

 Email: info@creative-biomart.com  Fax: 1-631-938-8127

 45-1 Ramsey Road, Shirley, NY 11967, USA

SDS-PAGE



 Tel: 1-631-559-9269 1-516-512-3133

 Email: info@creative-biomart.com  Fax: 1-631-938-8127

 45-1 Ramsey Road, Shirley, NY 11967, USA