

Recombinant Human SELE protein, Fc-tagged

Cat. No. SELE-661H Lot. No. (See product label)

SPECIFICATION

Product Overview Recombinant Human SELE protein (Trp22-Phe556), fused to human IgG1 Fc tag at C-terminus, was expressed in human 293 cells (HEK293).

Species Human

Source HEK293

ProteinLength 535

Description

E-Selectin is also known as CD62 antigen-like family member E (CD62E), endothelial-leukocyte adhesion molecule 1 (ELAM-1), or leukocyte-endothelial cell adhesion molecule 2 (LECAM2), a member of the Selectin family, is a 107-115 kDa cell surface glycoprotein. It is transiently expressed on vascular endothelial cells in response to IL-1 β and TNF α . E selectin has a cassette structure: an N-terminal, C-type lectin domain, an EGF (epidermal-growth-factor)-like domain, 6 Sushi domain (SCR repeat) units, a transmembrane domain (TM) and an intracellular cytoplasmic tail (cyto). During inflammation, E-selectin plays an important part in recruiting leukocytes to the site of injury. The local release of cytokines IL-1 and TNF- α by damaged cells induces the over-expression of E-selectin on endothelial cells of nearby blood vessels. E-selectin mediates the adhesion of tumor cells to endothelial cells, by binding to E-selectin ligands expressed by neutrophils, monocytes, eosinophils, memory-effector T-like lymphocytes, natural killer cells or cancer cells. Furthermore, a number of studies have reported that levels of E-Selectin may be elevated in subjects with a variety of pathological conditions.

 Tel: 1-631-559-9269 1-516-512-3133

 Email: info@creative-biomart.com  Fax: 1-631-938-8127

 45-1 Ramsey Road, Shirley, NY 11967, USA

Form	Lyophilized from 0.22 um filtered solution in 50 mM Tris, 100 mM Glycine, pH7.5, 10% trehalose.
Molecular Mass	The protein has a calculated MW of 84.8 kDa. The protein migrates as 150 kDa under reducing (R) condition (SDS-PAGE) due to glycosylation.
Endotoxin	Less than 1.0 EU per ug by the LAL method.
Purity	>95% as determined by SDS-PAGE.
Storage	<p>For long term storage, the product should be stored at lyophilized state at -20 centigrade or lower.</p> <p>Please avoid repeated freeze-thaw cycles.</p> <p>This product is stable after storage at:</p> <p>-20 centigrade to -70 centigrade for 12 months in lyophilized state;</p> <p>-70 centigrade for 3 months under sterile conditions after reconstitution.</p>
Reconstitution	It is recommended that sterile water be added to the vial to prepare a stock solution of 0.2 ug/ul. Centrifuge the vial at 4°C before opening to recover the entire contents.

GENE INFORMATION

Gene Name	SELE
Official Symbol	SELE
Synonyms	SELE; selectin E; ELAM, ELAM1, endothelial adhesion molecule 1; E-selectin; CD62E; ESEL; ELAM-1; endothelial adhesion molecule 1; CD62 antigen-like family member E; endothelial leukocyte adhesion molecule 1; leukocyte endothelial cell adhesion molecule 2; leukocyte-endothelial cell adhesion molecule 2; ELAM; ELAM1; LECAM2

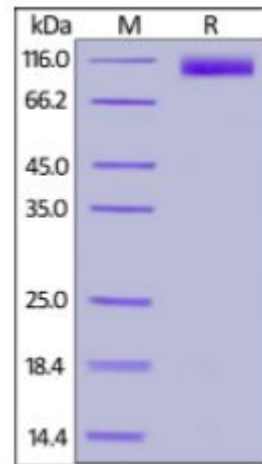
 Tel: 1-631-559-9269 1-516-512-3133

 Email: info@creative-biomart.com  Fax: 1-631-938-8127

 45-1 Ramsey Road, Shirley, NY 11967, USA

Gene ID	6401
mRNA Refseq	NM_000450
Protein Refseq	NP_000441
MIM	131210
UniProt ID	P16581

SDS-PAGE of SELE-661H



Human E-Selectin, Fc Tag on SDS-PAGE under reducing (R) condition. The gel was stained overnight with Coomassie Blue. The purity of the protein is greater than 95%.

Tel: 1-631-559-9269 1-516-512-3133

Email: info@creative-biomart.com Fax: 1-631-938-8127

45-1 Ramsey Road, Shirley, NY 11967, USA