

Recombinant Pig SELE Protein (23-429 aa), GST-tagged

Cat. No. SELE-800P Lot. No. (See product label)

SPECIFICATION

Product Overview	Recombinant Pig SELE Protein (23-429 aa) is produced by E. coli expression system. This protein is fused with a GST tag at the N-terminal. Protein Description: Partial.
Species	Pig
Source	E.coli
ProteinLength	23-429 aa
Description	Cell-surface glycoprotein having a role in immunoadhesion. Mediates in the adhesion of blood neutrophils in cytokine-activated endothelium through interaction with PSGL1/SELPLG. May have a role in capillary morphogenesis.
Form	Tris-based buffer, 50% glycerol
Molecular Mass	71.3 kDa
AA Sequence	<p>WSYSASTETMTFDDASAYCQQRYPYTHLVAIQNHAEIEYLNSTFNYSASYWIGIRKING TWTWIGTKKALTPEATNWAPGEPNNKQSNEDCVEIYIKRDKDSGKWNDERCSKKKL ALCYTAACTPTSCSGHGECIETINSSTCQCYPGFRGLQCEQVVECDALENPVNGVV TCPQSLPWNTTCAFECKEGFELIGPEHLQCTSSGSWDGKKPTCKAVTCDTVGHPQ NGDVSCNHSSIGEFAYKSTCHFTCAEGFGLQGPAQIECTAQQGWTQQAPVCKAVK CPAVSQPKNGLVKFTHSPTGEFTYKSSCAFSCEEGLRGSACLACTSQGQWTQE VPSCQVVQCSSLVPREINMSCSGEPVFGAVCTFACPEGWMLNGSVALTCGATGH WSGMLPTCEAPAESKIP</p>

 Tel: 1-631-559-9269 1-516-512-3133

 Email: info@creative-biomart.com  Fax: 1-631-938-8127

 45-1 Ramsey Road, Shirley, NY 11967, USA

Purity	> 90% as determined by SDS-PAGE.
Notes	Repeated freezing and thawing is not recommended. Store working aliquots at 4 centigrade for up to one week.
Storage	The shelf life is related to many factors, storage state, buffer ingredients, storage temperature and the stability of the protein itself. Generally, the shelf life of liquid form is 6 months at -20 centigrade/-80 centigrade. The shelf life of lyophilized form is 12 months at -20 centigrade/-80 centigrade.
Concentration	A hardcopy of COA with concentration instruction is sent along with the products.

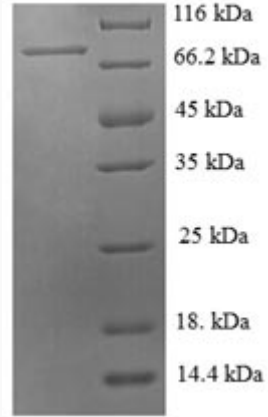
GENE INFORMATION

Gene Name	SELE selectin E [<i>Sus scrofa</i>]
Official Symbol	SELE
Synonyms	SELE; selectin E; E-selectin; ELAM-1; LECAM2;
Gene ID	397508
mRNA Refseq	NM_214268
Protein Refseq	NP_999433
UniProt ID	P98110

 Tel: 1-631-559-9269 1-516-512-3133

 Email: info@creative-biomart.com  Fax: 1-631-938-8127

 45-1 Ramsey Road, Shirley, NY 11967, USA



(Tris-Glycine gel) Discontinuous SDS-PAGE (reduced) with 5% enrichment gel and 15% separation gel.

 Tel: 1-631-559-9269 1-516-512-3133

 Email: info@creative-biomart.com  Fax: 1-631-938-8127

 45-1 Ramsey Road, Shirley, NY 11967, USA