

# Recombinant Human SELENBP1 Protein, MYC/DDK-tagged, C13 and N15-labeled

**Cat. No.** SELENBP1-183H    **Lot. No.** (See product label)

## SPECIFICATION

### Product Overview

SELENBP1 MS Standard C13 and N15-labeled recombinant protein (NP\_003935) with a C-terminal MYC/DDK tag, was expressed in HEK293 cells.

### Species

Human

### Source

HEK293

### Description

This gene encodes a member of the selenium-binding protein family. Selenium is an essential nutrient that exhibits potent anticarcinogenic properties, and deficiency of selenium may cause certain neurologic diseases. The effects of selenium in preventing cancer and neurologic diseases may be mediated by selenium-binding proteins, and decreased expression of this gene may be associated with several types of cancer. The encoded protein may play a selenium-dependent role in ubiquitination/deubiquitination-mediated protein degradation. Alternatively spliced transcript variants encoding multiple isoforms have been observed for this gene. [provided by RefSeq, Apr 2012]

### Molecular Mass

52.4 kDa

### AA Sequence

MATKCGNCGPGYSTPLEAMKGPREEIVYLPCIYRNTGTEAPDYLATVDVDPKSPQY  
CQVIHRLPMPNLKDELHHSWNTCSSCFGDSTKSRTKLVLPSSLISSRIYVVDVGSEP  
RAPKLHKVIEPKDIHAKCELAFLHTSHCLASGEVMISLGDVKGNGKGGFVLLDGETF  
EVKGTWERPGGAAPLG YDFWYQPRHNMISTEWAAPNVLRDGFNPADVEAGLYG  
SHLYVWDWQRHEIVQTLSLKDGLIPLEIRFLHNPDAAQGFVGCALSSTIQR FYKNEG

 Tel: 1-631-559-9269    1-516-512-3133

 Email: [info@creative-biomart.com](mailto:info@creative-biomart.com)     Fax: 1-631-938-8127

 45-1 Ramsey Road, Shirley, NY 11967, USA

GTWSVEKVIQVPPKKVKGWLLPEMPGLITDILLSLDDRFLYFSNWLHGDLRQYDISD  
 PQRRLTGQLFLGGSIVKGGPVQVLEDEELKSQPEPLVVKGKRVAGGPQMIQLSLD  
 GKRLYITTSLYSAWDKQFYFDLIREGSVMLQVDVDTVKGGLKLNPNFLVDFGKEPLG  
 PALAHELRYPGGDCSSDIWITRTRPLEQKLISEEDLAANDILDYKDDDDKV

**Purity** > 80% as determined by SDS-PAGE and Coomassie blue staining

**Stability** Stable for 3 months from receipt of products under proper storage and handling conditions.

**Storage** Store at -80 centigrade. Avoid repeated freeze-thaw cycles.

**Concentration** 50 µg/mL as determined by BCA

**Storage Buffer** 100 mM glycine, 25 mM Tris-HCl, pH 7.3.

## GENE INFORMATION

**Gene Name** SELENBP1 selenium binding protein 1 [ Homo sapiens (human) ]

**Official Symbol** SELENBP1

**Synonyms** LPSB; SP56; hSBP; SBP56

**Gene ID** 8991

**mRNA Refseq** NM\_003944

**Protein Refseq** NP\_003935

**MIM** 604188

 Tel: 1-631-559-9269 1-516-512-3133

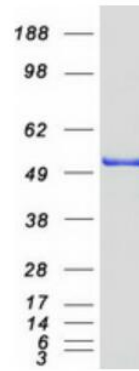
 Email: [info@creative-biomart.com](mailto:info@creative-biomart.com)  Fax: 1-631-938-8127

 45-1 Ramsey Road, Shirley, NY 11967, USA

UniProt ID

Q13228

SDS-PAGE



 Tel: 1-631-559-9269 1-516-512-3133

 Email: [info@creative-biomart.com](mailto:info@creative-biomart.com)  Fax: 1-631-938-8127

 45-1 Ramsey Road, Shirley, NY 11967, USA