

# Recombinant Full Length Human SELENBP1 Protein, C-Flag-tagged

**Cat. No.** SELENBP1-2066HFL    **Lot. No.** (See product label)

## SPECIFICATION

<b>Product Overview</b>	Recombinant Full Length Human SELENBP1 Protein, fused to Flag-tag at C-terminus, was expressed in Mammalian cells.
<b>Species</b>	Human
<b>Source</b>	Mammalian Cells
<b>Description</b>	This gene encodes a member of the selenium-binding protein family. Selenium is an essential nutrient that exhibits potent anticarcinogenic properties, and deficiency of selenium may cause certain neurologic diseases. The effects of selenium in preventing cancer and neurologic diseases may be mediated by selenium-binding proteins, and decreased expression of this gene may be associated with several types of cancer. The encoded protein may play a selenium-dependent role in ubiquitination/deubiquitination-mediated protein degradation. Alternatively spliced transcript variants encoding multiple isoforms have been observed for this gene.
<b>Form</b>	25 mM Tris HCl, pH 7.3, 100 mM glycine, 10% glycerol.
<b>Molecular Mass</b>	52.2 kDa
<b>AA Sequence</b>	MATKCGNCGPGYSTPLEAMKGPREEIVYLPCIYRNTGTEAPDYLATVDVDPKSPQY CQVIHRLPMPNLKD ELHHSGWNTCSSCFGDSTKSRTKLVLPSLISSRIYVVDVGSEP RAPKLHKVIEPKDIHAKCELAFLHTSH CLASGEVMISLGDVKGNKGKGFVLLDGET FEVKGTWERPGGAAPLGYDFWYQPRHNMISTEWAAPNVL RDGFNPADVEAGLY

 Tel: 1-631-559-9269    1-516-512-3133

 Email: [info@creative-biomart.com](mailto:info@creative-biomart.com)     Fax: 1-631-938-8127

 45-1 Ramsey Road, Shirley, NY 11967, USA

GSHLYVVDWQRHEIVQTLSLKDGLIPLEIRFLHNPDAAQGFVGCALSSTIQRFYKN E  
 GGTWSVEKVIQVPPKVKVKGWLLPEMPGLITDILLSLDDRFLYFSNWLHGDLRQYDIS  
 DPQRPRLTGQLF LGG SIVKGGPVQVLEDEELKSQPEPLVVKGKRVAGGPQMIQLSL  
 DGKRLYITTSLYSAWDKQFYPLIRE GSVMLQVDVDTVKGGLKLNPNFLVDFGKEP  
 LGPALAHELRYPGGDCSSDIWI TRTRPLEQKLISEEDLAANDILDYKDDDDKV

**Purity** > 80% as determined by SDS-PAGE and Coomassie blue staining.

**Stability** Stable for 12 months from the date of receipt of the product under proper storage and handling conditions. Avoid repeated freeze-thaw cycles.

**Storage** Store at -80 centigrade.

**Concentration** >50 ug/mL as determined by microplate BCA method.

**Preparation** Recombinant protein was captured through anti-DDK affinity column followed by conventional chromatography steps.

**Full Length** Full L.

## GENE INFORMATION

**Gene Name** [SELENBP1 selenium binding protein 1 \[ Homo sapiens \(human\) \]](#)

**Official Symbol** [SELENBP1](#)

**Synonyms** MTO; LPSB; SP56; hSBP; EHMT0; SBP56; HEL-S-134P

**Gene ID** [8991](#)

**mRNA Refseq** [NM\\_003944.4](#)

 Tel: 1-631-559-9269 1-516-512-3133

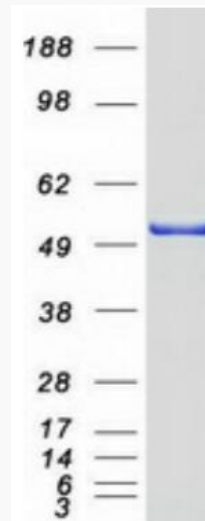
 Email: [info@creative-biomart.com](mailto:info@creative-biomart.com)  Fax: 1-631-938-8127

 45-1 Ramsey Road, Shirley, NY 11967, USA

Protein Refseq NP\_003935.2

MIM 604188

UniProt ID Q13228



Coomassie blue staining of purified SELENBP1 protein.

Tel: 1-631-559-9269 1-516-512-3133

Email: [info@creative-biomart.com](mailto:info@creative-biomart.com) Fax: 1-631-938-8127

45-1 Ramsey Road, Shirley, NY 11967, USA