

Recombinant Human SELL protein, hFc&His-tagged

Cat. No. SELL-1262H Lot. No. (See product label)

SPECIFICATION

Product Overview	Recombinant Human SELL/L-selectin/LAM-1/CD62L Protein is produced by HEK293 expression system. The target protein is expressed with sequence (Trp52-Asn345) of human L-Selectin/CD62L (Accession #NP_000646.2) fused with an Fc, 6xHis tag at the C-terminus.
Species	Human
Source	HEK293
ProteinLength	Trp52-Asn345
Form	Lyophilized from a 0.22 µm filtered solution of PBS, pH 7.4.
Molecular Mass	95-105 kDa
Endotoxin	< 0.1 EU/µg of the protein by LAL method.
Purity	> 92% by SDS-PAGE.
Storage	Store the lyophilized protein at -20°C to -80 °C for long term. After reconstitution, the protein solution is stable at -20 °C for 3 months, at 2-8 °C for up to 1 week.
Reconstitution	Reconstitute to a concentration of 0.1-0.5 mg/mL in sterile distilled water.

 Tel: 1-631-559-9269 1-516-512-3133

 Email: info@creative-biomart.com  Fax: 1-631-938-8127

 45-1 Ramsey Road, Shirley, NY 11967, USA

GENE INFORMATION

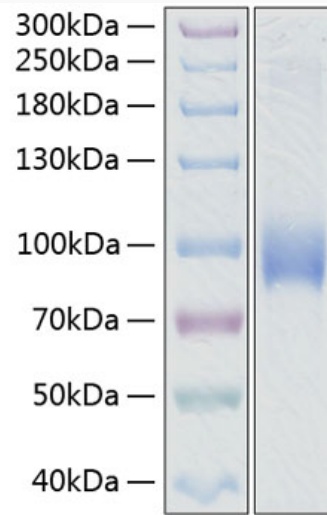
Gene Name	SELL selectin L [Homo sapiens]
Official Symbol	SELL
Synonyms	SELL; selectin L; LNHR, LYAM1, lymphocyte adhesion molecule 1; L-selectin; CD62L; hLHRc; LAM 1; LAM1; Leu 8; LSEL; Lyam 1; PLNHR; gp90-MEL; pln homing receptor; lymph node homing receptor; lymphocyte adhesion molecule 1; leukocyte surface antigen Leu-8; CD62 antigen-like family member L; leukocyte-endothelial cell adhesion molecule 1; TQ1; LEU8; LNHR; LYAM1; LECAM1;
Gene ID	6402
mRNA Refseq	NM_000655
Protein Refseq	NP_000646
MIM	153240
UniProt ID	P14151

 Tel: 1-631-559-9269 1-516-512-3133

 Email: info@creative-biomart.com  Fax: 1-631-938-8127

 45-1 Ramsey Road, Shirley, NY 11967, USA

SDS-PAGE



 Tel: 1-631-559-9269 1-516-512-3133

 Email: info@creative-biomart.com  Fax: 1-631-938-8127

 45-1 Ramsey Road, Shirley, NY 11967, USA