

Recombinant Human SELL Protein, His-tagged

Cat. No. SELL-227H Lot. No. (See product label)

SPECIFICATION

Product Overview	Recombinant Human SELL(52-345aa) fused with His tag at C-terminal was expressed in Insect cells.
Species	Human
Source	Insect Cells
ProteinLength	52-345aa
Description	SELL, also known as L-selectin, is a cell surface component that is a member of a family of adhesion/homing receptors that play important roles in lymphocyte-endothelial cell interactions. This protein mediated lymphocyte recirculation is required for maintaining the appropriate tissue distribution of lymphocyte subpopulations including naive and effector subsets such as regulatory T cells. Importantly, this protein has been shown to have both adhesive and signaling functions during leukocyte migration.
Form	Liquid. In Phosphate Buffered Saline (pH 7.4) containing 10% glycerol.
Molecular Mass	34.1kDa (303aa) 40-57kDa (SDS-PAGE under reducing conditions)
AA Sequence	ADPWTYHYSE KPMNWQRARR FCRDNYTDLV AIQNKAEIEY LEKTLPFSSRS YYWIGIRKIG GIWTWVGTKN SLTEEAENWG DGEPNNKKNK EDCVEIYIKR NKDAGKWNDD ACHKLKAALC YTASCQPWSC SGHGECVEII NNYTCNCDVG YYGPQCQFVI QCEPLEAPEL GTMDCTHPLG

 Tel: 1-631-559-9269 1-516-512-3133

 Email: info@creative-biomart.com  Fax: 1-631-938-8127

 45-1 Ramsey Road, Shirley, NY 11967, USA

NFSFSSQCAF SCSEGTNLTG IEETTCGPFG NWSSPEPTCQ VIQCEPLSAP
 DLGIMNCSHP LASFSFTSAC TFICSEGTEL IGKKTICES
 SGIWSNPSPi CQKLDKSFMS IKEGDYNHHH HHH

Purity > 90% by SDS - PAGE

Applications SDS-PAGE

Storage Can be stored at +4 centigrade short term (1-2 weeks). For long term storage, aliquot and store at -20 centigrade or -70 centigrade. Avoid repeated freezing and thawing cycles.

Concentration 0.25 mg/ml (determined by Absorbance at 280nm)

GENE INFORMATION

Gene Name [SELL selectin L \[Homo sapiens \]](#)

Official Symbol [SELL](#)

Synonyms SELL; selectin L; LNHR, LYAM1, lymphocyte adhesion molecule 1; L-selectin; CD62L; hLHRc; LAM 1; LAM1; Leu 8; LSEL; Lyam 1; PLNHR; gp90-MEL; pln homing receptor; lymph node homing receptor; lymphocyte adhesion molecule 1; leukocyte surface antigen Leu-8; CD62 antigen-like family member L; leukocyte-endothelial cell adhesion molecule 1; TQ1; LEU8; LNHR; LYAM1; LECAM1;

Gene ID [6402](#)

mRNA Refseq [NM_000655](#)

Protein Refseq [NP_000646](#)

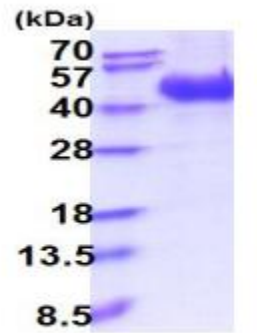
 Tel: 1-631-559-9269 1-516-512-3133

 Email: info@creative-biomart.com  Fax: 1-631-938-8127

 45-1 Ramsey Road, Shirley, NY 11967, USA

MIM 153240

UniProt ID P14151



15% SDS-PAGE (3ug)

 Tel: 1-631-559-9269 1-516-512-3133

 Email: info@creative-biomart.com  Fax: 1-631-938-8127

 45-1 Ramsey Road, Shirley, NY 11967, USA