

Recombinant Human SELL Protein (Met1-Asn332), C-His tagged

Cat. No. SELL-5084H Lot. No. (See product label)

SPECIFICATION

Product Overview	Recombinant human SELL (Met1-Asn332) fused with the C-terminal His tag was expressed in Mammalian cells.
Species	Human
Source	Mammalian Cells
ProteinLength	Met1-Asn332
Form	Lyophilized powder/frozen liquid
Molecular Mass	36.63 kDa
Endotoxin	< 1.0 EU/μg of the protein as determined by the LAL method.
Purity	>90% as determined by SDS-PAGE.
Notes	For research use only.
Storage	Use a manual defrost freezer and avoid repeated freeze thaw cycles. Store at 2 to 8 centigrade for one week. Store at -20 to -80 centigrade for twelve months from the date of receipt.
Storage Buffer	Supplied as solution form in PBS or lyophilized from PBS.

 Tel: 1-631-559-9269 1-516-512-3133

 Email: info@creative-biomart.com  Fax: 1-631-938-8127

 45-1 Ramsey Road, Shirley, NY 11967, USA

Reconstitution Reconstitute in sterile water for a stock solution.

Shipping They are shipped out with dry ice/blue ice unless customers require otherwise.

GENE INFORMATION

Gene Name [SELL selectin L \[Homo sapiens \(human\) \]](#)

Official Symbol [SELL](#)

Synonyms SELL; selectin L; LNHR, LYAM1, lymphocyte adhesion molecule 1; L-selectin; CD62L; hLHRC; LAM 1; LAM1; Leu 8; LSEL; Lyam 1; PLNHR; gp90-MEL; pIn homing receptor; lymph node homing receptor; lymphocyte adhesion molecule 1; leukocyte surface antigen Leu-8; CD62 antigen-like family member L; leukocyte-endothelial cell adhesion molecule 1; TQ1; LEU8; LNHR; LYAM1; LECAM1;

Gene ID [6402](#)

mRNA Refseq [NM_000655](#)

Protein Refseq [NP_000646](#)

MIM [153240](#)

UniProt ID [P14151](#)

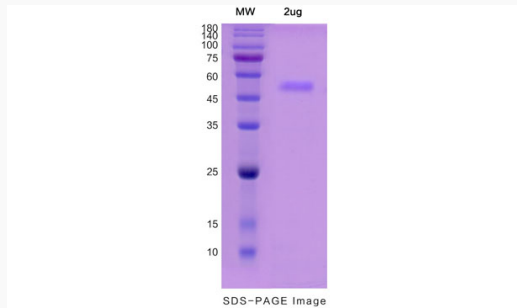
 Tel: 1-631-559-9269 1-516-512-3133

 Email: info@creative-biomart.com  Fax: 1-631-938-8127

 45-1 Ramsey Road, Shirley, NY 11967, USA



SDS-PAGE



Tel: 1-631-559-9269 1-516-512-3133

Email: info@creative-biomart.com Fax: 1-631-938-8127

45-1 Ramsey Road, Shirley, NY 11967, USA